



SEPARATING PEOPLE FROM HAZARDS

# KeeGuard® Safety Railing



- NON-PENETRATING SYSTEM: NO ROOF LEAKS
- COUNTERBALANCE ENGINEERING FOR MAXIMUM STRENGTH
- NO WELDING, BENDING, OR THREADING OF PIPE: EASY ASSEMBLY
- MEETS OSHA SAFETY STANDARDS FOR GUARDRAIL SYSTEMS

# KeeGuard<sup>®</sup>

## Engineered for Safety



## Versatility

All Types. All Shapes.  
Even the Corners.

KeeGuard component railings use the original Kee Klamp modular system for multiple configurations and versatility on uniquely shaped installations. Only KeeGuard offers optimal stability for all standard rooftop systems including Membrane, Metal Profile, and Standing Seam up to 45°. KeeGuard is engineered to eliminate risk on any flat or low-slope roof including:

- Composite Rooftop Systems
- Roofs with Changes in Level
- Complex Roof Shapes
- Safe access to equipment located at roof edge
- Green Roofs

## Longevity

Permanent Peace of Mind.

The KeeGuard guardrail system provides permanent, free-standing and durable edge protection without penetration of the roofing membrane or the building structure. The hot-dipped galvanized finish is corrosion resistant and low maintenance for safe and dependable rooftop edge protection.

## Aesthetics

Powder Coated Colors.

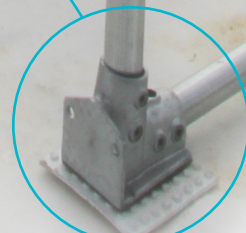


KeeGuard's galvanized steel finish is corrosion-resistant and is available in a full range of powder coat RAL colors. Our 11° Angled Railing tilts back out of sight so the roof line offers a clean view from the ground.

## Counterbalance

The Physics of Cantilever Design.

Modular and durable, our component-based solution uses counter-weight engineering. The simple cantilever principle provides unrivalled strength and safety. The heavy-duty KeeGuard bases are manufactured using molded, 100% recycled PVC. Each 30 pound base is positioned at specific intervals to create a stable, protective barrier on the rooftop.





## KeeGuard® Features

- Modular component system for multiple configurations
- Adaptable to varying angles and radius edges
- Accommodates ladders, equipment and rooftop obstructions
- Simple counterbalance construction made from 100% recycled PVC
- Durable galvanized finish is corrosion resistant

## KeeGuard® Benefits

- Non-penetrating solution - roof membrane will not leak
- Passive barrier that protects all personnel; no training required
- Integrates easily with your current fall protection products
- Lower installation cost than fabricated pipe
- No rooftop parapet required

## Installing KeeGuard®

- KeeGuard Roof Edge Fall Protection System includes pipe railings, uprights, bases, counterweights and fittings
- No specialized labor or work permits, no welding
- Tools required: torque wrench or hex key

# Protect your workforce, secure your roof with KeeGuard

STANDING SEAM | METAL PROFILE | MEMBRANE | COMPOSITE | GREEN ROOF



## KeeGuard® TopFix

**Metal Roof Perimeter Protection**  
A smart solution for standing seam and metal profile roof systems.



## KeeGuard® FoldShield

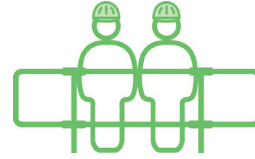
**Folding Safety Rail System**  
Maintain building aesthetics with cantilevered and foldable guardrail.



## KeeGuard® Contractor

**Upright, Weighted Guardrail**  
Modular safety rail provides a secure barrier around tight areas. Free-standing and portable for temporary installations.

# Compliance



## Hierarchy of Fall Protection

- ★★★★★ 1. Eliminate the Hazards
- ★★★★★ 2. Collective Fall Protection [OSHA: Passive]
- ★★★ 3. Work Restraint [OSHA: Active]
- ★ 4. Personal Fall Arrest System

## OSHA Compliance

- **OSHA Code 1910.28(b)(13)**  
Unprotected Edges: Work on Low Slope Roofs
- KeeGuard meets OSHA compliance for guardrail systems: Capable of withstanding, without failure, a force of at least 200 pounds (890 N) applied in a downward or outward direction within 2 inches (5 cm) of the top edge, at any point along the top rail
- OSHA regulations cite that on any building where work is performed within 15' of an open roof edge, each worker must be protected from the hazard of falling
- KeeGuard provides a safety barrier that requires no formal training or experience [it is passive] and "collectively" protects people when working at height



# Hierarchy of Fall Protection

## Depend on the Experts at Kee Safety

A truly comprehensive rooftop solution follows the Hierarchy of Fall Protection, the gold-standard of safety procedures. Our experts start by inspecting the roof site for potential fall hazards. From there, a complete system solution and recommendations that descend down the four levels of the hierarchy—from simple, sensible approaches for eliminating risks - all the way down to lifesaving personal protection systems.

# 1

## ELIMINATE HAZARDS

The preferred solution to all fall hazards is elimination of the danger.



# 2

## COLLECTIVE

This solution “collectively” protects everyone. Rooftop perimeter guardrail is the most common example of collective fall protection



# 3

## WORK RESTRAINT

Prevents a fall from occurring by using personal fall arrest equipment so that the user cannot reach the roof edge



# 4

## FALL ARREST SYSTEM

A fall is possible, but the fall is “arrested” or interrupted within an acceptable force and fall distance



Kee Safety uses the Hierarchy of Fall Protection to reduce risk on the roof. Originated by OSHA, the goal is to expertly evaluate, provide a comprehensive strategy, and install a rooftop solution to successfully and safely separate people from hazards.

Collective Systems require no additional training to use. Work Restraint and Fall Arrest Systems both require a high level of user competency, training and additional inspection to be used effectively.



**USA**  
Kee Safety, Inc.  
100 Stradtman Street  
Buffalo, NY 14206  
Tel: (716) 896 4949  
Fax: (716) 896 5696  
Toll Free: (800) 851 5181  
www.keesafety.com  
Email: info@keesafety.com

**Canada**  
Kee Safety, Ltd.  
40 North Rivermede Road, Units 6 - 7  
Concord, Ontario L4K 2H3  
Tel: (905) 669 1494  
Fax: (905) 669 4347  
Toll Free: (877) 505 5003  
www.keesafety.ca

Kee Klamp, Kee Lite, Kee Stainless, KeeGuard, Kee Dome, Kee Hatch, Kee Mark, Kee Access, Kwik Kit, Kee Anchor, Weightanka, Wireanka, KeeLine, Kee Walk and Kee Projects are all registered trademarks of Kee Safety Ltd, Beam Clamp, and Box Bolt are all registered trademarks of Access Technologies Ltd, a subsidiary of Kee Safety International Ltd. While every effort has been made to ensure the accuracy of the information contained in this brochure, Kee Safety, Inc cannot be held responsible for any errors or omissions. Kee Safety, Inc reserves the right to alter or withdraw products without prior notice. Kee Safety, Inc does not accept responsibility for any loss or damage arising from improper use of its products.  
Copyright 2019 Kee Safety, Inc. All Rights Reserved.