

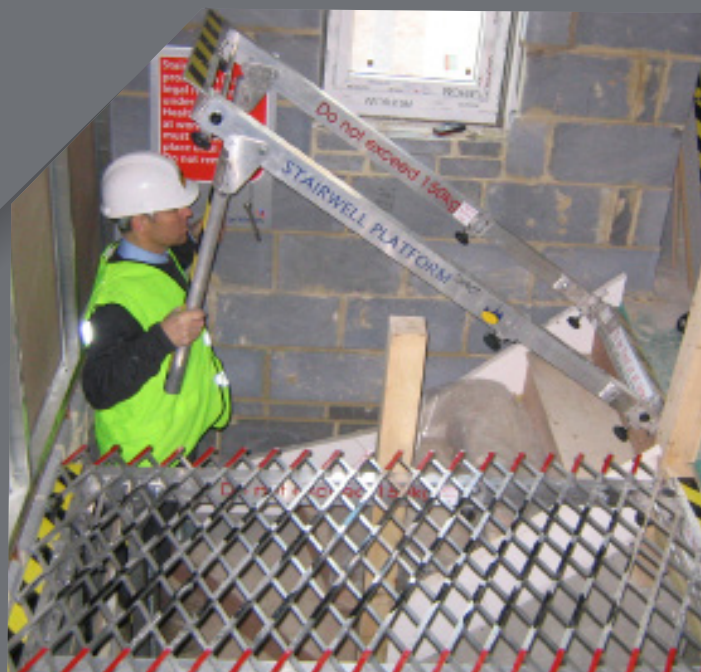
StairSpan

Keep
Safety

IMPROVE PRODUCTIVITY AND SAFETY BY CREATING A SAFE PLATFORM TO WORK FROM

Designed to provide a safe working platform that doesn't block access to stairs. Stairspan can be used by all trades working on residential stairs and stairwells during construction and protects workers from falling into stairwells, voids, or down stairways.

INNOVATIVE PATENTED SAFETY SOLUTIONS



STAIRWELL PLATFORM SYSTEM

StairSpan

KEY FEATURES & BENEFITS

- > Quick and easy to install in under 10 minutes with just four components.
- > Temporary work platform.
- > Allows easy access and movement in stairwells in this dangerous and awkward area.

The StairSpan stairwell protection system increases productivity when working at height in stairwells by providing a safe, sturdy platform to work from while preventing falls. Built using lightweight aluminum, it is easy to transport, and its flexible design allows work to continue without blocking access to the stairs. The mat can easily be slid back to allow workers and materials access.

With just four components, StairSpan can be easily installed by a single worker, making it a quick and efficient solution. Its telescopic frame can be adjusted to many different lengths, ensuring its adaptability for even the most complex of stairways.

The StairSpan system comes in two sizes: a standard and a compact version. Individual frames can be connected and used in conjunction with handrails, where necessary, to ensure the protection of most staircase layouts and designs.

Canada

- > CSA S269.2-16 (reaffirmed 2021) Access scaffolding for construction purposes
- > 6.2.3 Live loads on access scaffold platforms – OSC matting products comply with all three loading duties
- > CSA Z797:18 National Standard of Canada (reaffirmed 2023)
- > Code of practice for access scaffold – OSC matting products comply with loading duties

SPECIFICATION

Compact frame adjusts from 4'7" to 6'2" | 1.4m to 1.9m

Weight 41.45 lbs | 18.8kg

Standard frame adjusts from 6'10" to 9'10" | 2.1m to 3m

Weight 57.32 lbs | 26kg

Maximum work load of both systems 496.04 lbs | 225kg

Width of both frames 2'3" | 700mm

Training and maintenance offered/required.

CURRENTLY USED IN THESE SECTORS



CONSTRUCTION



DEMOLITION



FACILITIES



CARPENTRY



PLASTERS &
DECORATORS



Head Office
Ontario
40 North Rivermede Road,
Units 6 - 7 Concord,
Ontario L4K 2H3

Regional Office
Alberta Office & Training Centre
Unit 107 – 7155, 57 Street SE
Calgary - Alberta T2C 5B1
Quebec Office
118 - 6185 boul. Taschereau
local 180 Brossard, Québec J4Z 0E4

Tel: (905) 669 1494
Toll Free: (877) 505 5003
Web: www.keesafety.ca