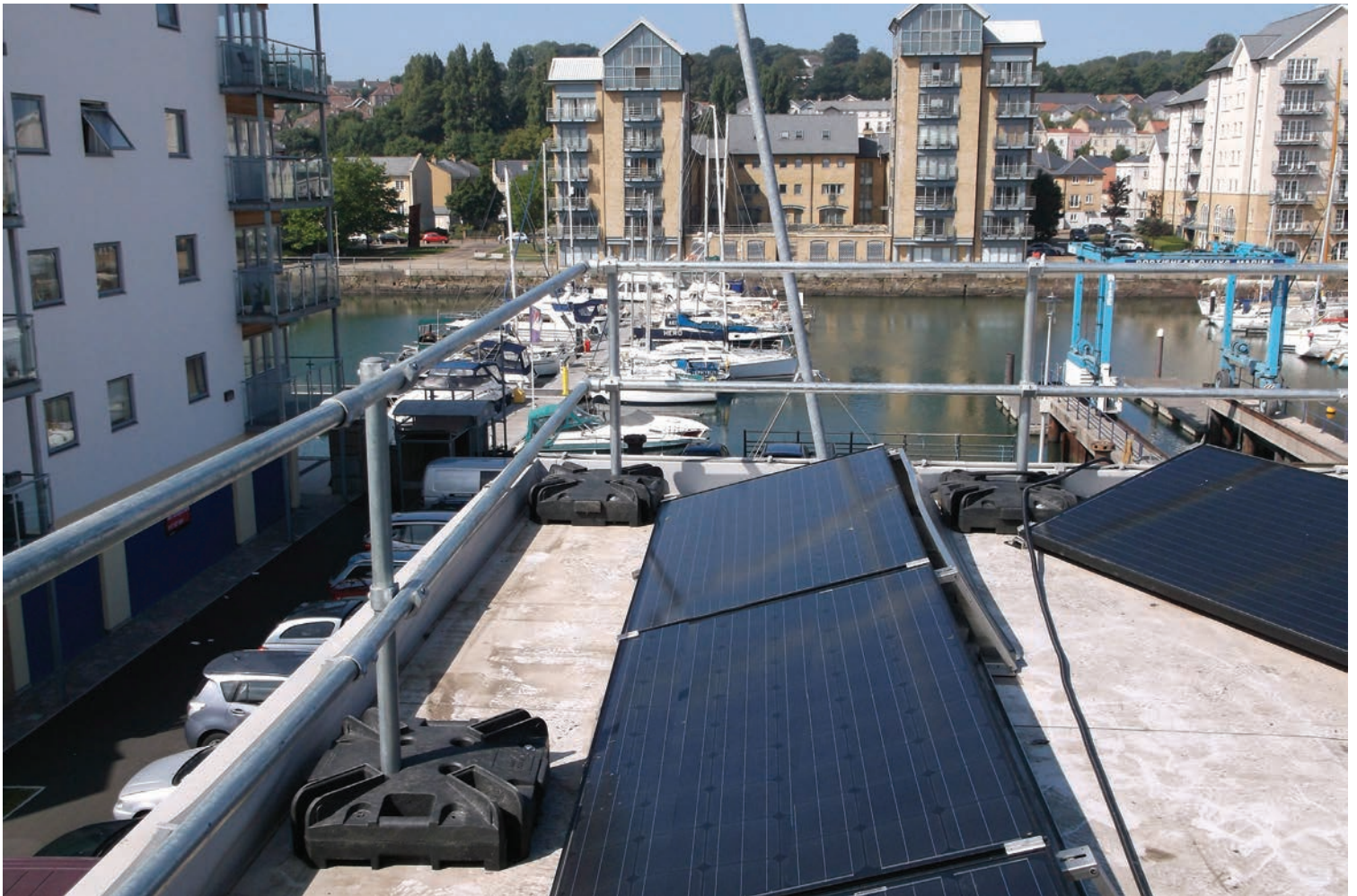




SAFETY AT THE HIGHEST LEVEL

# Free Standing Roof Edge Protection without Counterweights



- NO COUNTERWEIGHTS REQUIRED
- RECYCLED PVC BASE WEIGHTS
- MINIMAL FOOTPRINT
- COMPLIES WITH EN 13374 CLASS A, EN ISO 14122 PART 3 & BS 13700

# KeeGuard® Premium

**KeeGuard® Premium** offers a new and innovative approach to freestanding, non-penetrative roof top railing systems. The unique base weights eliminate the need for off-set counterweights, with only 'Open ended' systems utilising returns at each end of a run to minimise movement. **KeeGuard® Premium** is suitable for both temporary and permanent applications on roofs of up to 10 degree pitch.

The system incorporates unique 2-part interlocking recycled PVC base weights, which can be split to allow carrying by a single person or can easily be carried complete by two workers using the comfortable moulded handles. Pre-assembled uprights, 48.3 dia. tube and **Kee Klamp** fittings are easily and quickly assembled to provide a solid guardrail solution. The design of the base weights also allows for toe-boards to be easily slotted into place if required.

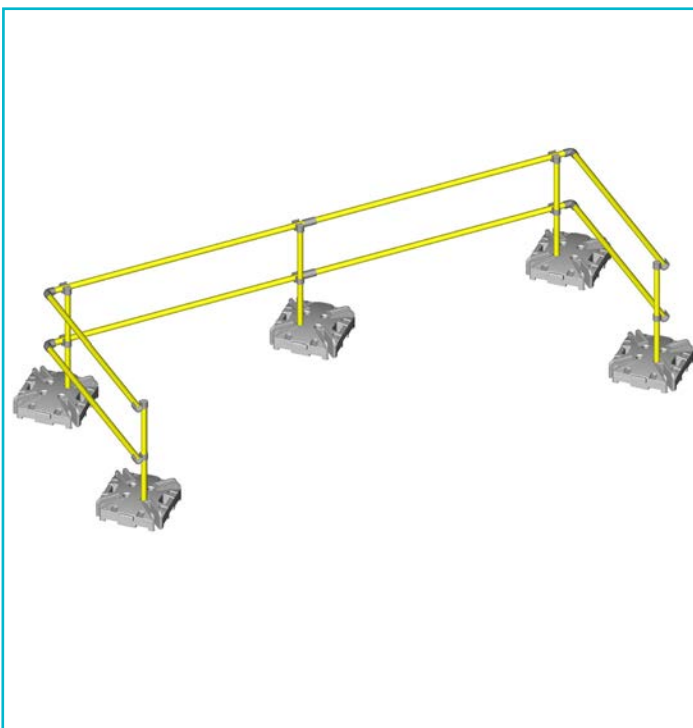


**KeeGuard® Premium** guardrail can also be used in combination with standard **KeeGuard®** where the counterbalance will not fit in with existing roof equipment.

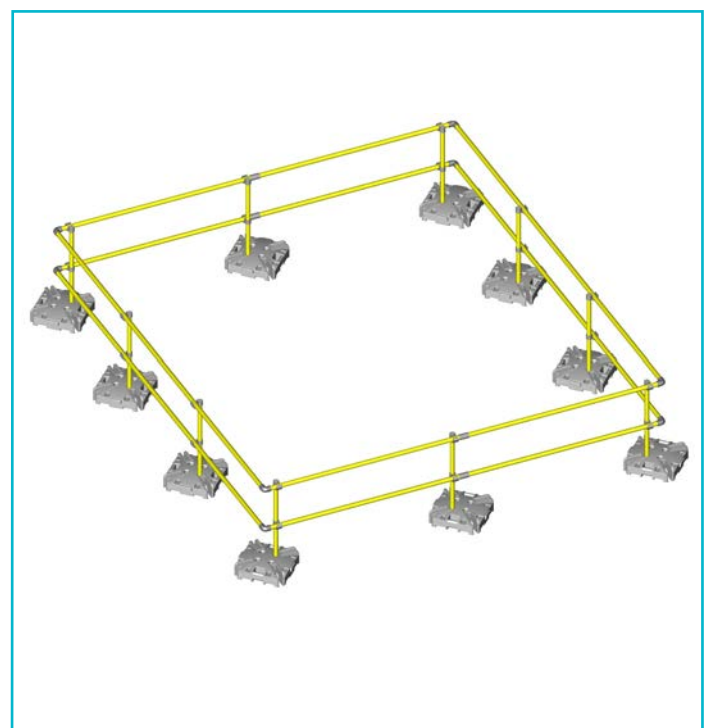
In addition to roof edge protection **KeeGuard® Premium** makes a great solution for temporary worker protection for ground based railing situations.

## KeeGuard® Premium Configuration – 3m Bays

### Open Ended



### Closed Loop



## Versatile, Easy to Assemble

Pre-built 1100mm high uprights feature open cup fittings for quick and easy assembly.

The uprights are secured in the recycled PVC base weights by galvanised steel collars and set screws allowing variable angle changes of direction, which, in combination with **KEE KLAMP** fittings make the system solid. Assembly is easy, using an extended hex key drive with a ratchet spanner or battery hand drill.

**KEEGUARD PREMIUM** allows bay sizes between uprights of up to 3m with 2.2m returns required at each end of the system on open ended systems.

All the 48.3mm dia. railing and uprights are hot dip galvanised to EN ISO 1461 as standard for long term corrosion resistance. Powder Coating in Safety Yellow over the galvanised finish is available as an optional extra.

Each 2 part base weight assembly is moulded from recycled PVC in two interlocking halves. Overall dimensions are 550mm square x 161mm deep and weigh a minimum 40 KG.

The base weights incorporate comfortable carrying handles and slots for an optional toe board if required. Their inter-locking design also allows the weights to be stacked for easy storage and transport.



### Features

- No Counter-weights
- Unique Recycled PVC 2 part Weight
- Non-penetrative, free standing system
- **KEE KLAMP** fittings ensure flexibility and strength
- Toe-board slots
- Patent pending

### Benefits

- Smaller footprint than counterweighted systems
- Solid construction
- No waterproofing required
- Quick and Easy assembly and dis-assembly
- Complies with EN 13374 Class A, EN ISO 14122 Part 3 and BS 13700

# Separating People From Hazards

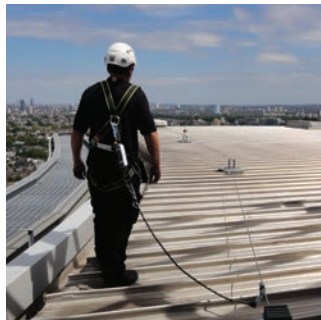
**Kee®  
Guard**



**Kee®  
Dome**



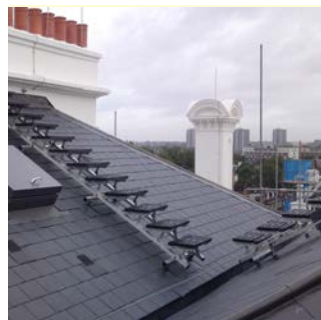
**Kee®  
Line**



**Kee®  
Anchor**



**Kee®  
Walk**



**Kee®  
Klump**



**Kee®  
Gate**



**Beam Clamp®**  
A KEE SAFETY PRODUCT



Kee Safety Limited  
Cradley Business Park  
Overend Road  
Cradley Heath  
B64 7DW

Tel: +44 (0) 1384 632 188  
Fax: +44 (0) 1384 632 192

Email: [sales@keesafety.com](mailto:sales@keesafety.com)  
Website: [www.keesafety.co.uk](http://www.keesafety.co.uk)