

ABSEILING SAFETY PRODUCTS

Davit Arms, Davit Bases & Abseil Rails



ABSEILING SAFETY PRODUCTS

Overview

Abseiling places the worker in a constant state of risk. The products that support people performing façade access and maintenance require quality and testing that is of the highest standard. Safety Engineering Products (a Kee Safety Company) produces several structural anchorages that have been tested and proven to exceed industry standards.



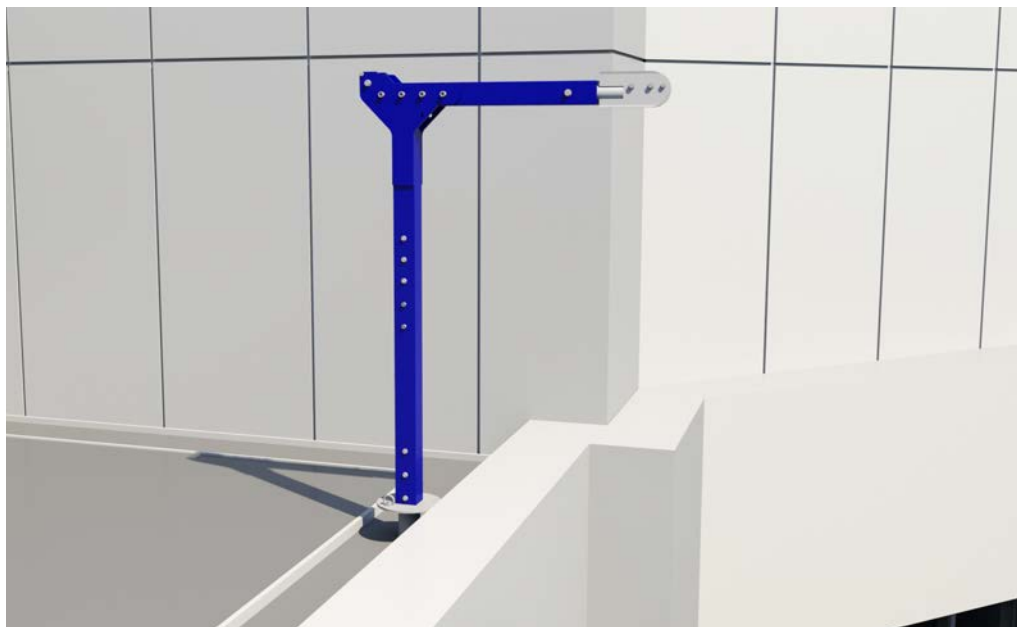
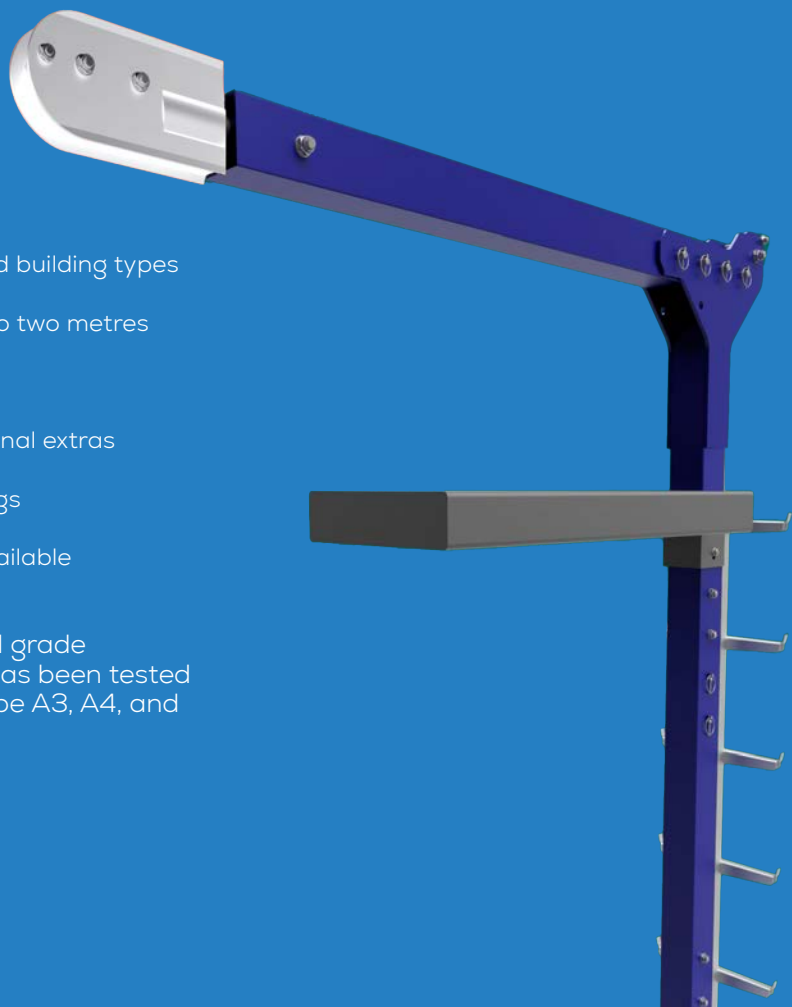


DAVITPRO ARMS

Features & Overview

- Wide range of sizes to suit virtually all roof and building types
- Standard outreach arms available from one to two metres
- Bespoke length outreach arms available
- Aluminium Y spur ladder and Gangplank optional extras
- Powder coated finish and stainless steel fittings
- Standard carry bag and other accessories available

DavitPro davit arms are made from structural grade aluminum. Easy to carry and store, DavitPro has been tested to BS 8610:2017 for up to 2 persons under type A3, A4, and A5 procedures.



DAVITPRO ARMS

Technical Features



Details & Options

- Standard Arm Lengths: 1m, 1.5m, and 2m
- Standard Height: 1.8m

Highlights

- Bespoke dimension arms and masts are available
- Split Mast Design: Split mast design makes the unit easier to transport
- Pins for easy assembly and disassembly



Accessories

- Access Ladder – Easier access to the davit arm
- Access platform – Used when weaker parapets are in place
- Counter boom – Allows for increased height and reach when back-anchor is not available

Certifications & Standards

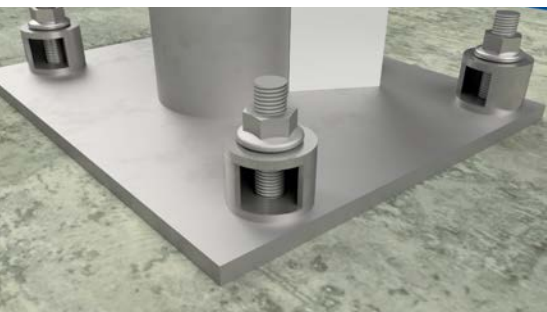
- DavitPro arms have been tested by the manufacturer to an ultimate load of 21kN. Testing conforms to BS 8610:2017 for 2 persons (1 user and 1 rescue) under type A3, A4, and A5 procedures
- Certified only for use with DavitPro bases

DAVITPRO BASES

Features & Overview

- Three primary base types to cover a wide range of situations
- Standard and bespoke sizes available
- Several styles of D-ring attachment
- Additional weathering options available

All base designs have been tested to BS 8610:2017 Type A3.



DAVITPRO BASES

Details & Options



Three primary DavitPro bases are available:

Surface Mounted

- Height options: 212mm to 650mm
- Bespoke design to suit the application
- Available with twin gussets for additional loading

Cast-In Place

- Height options: Flush mount to 500mm
- Available with drip disk for weathering

Wall Mounted

- Available in bespoke offset distances



Tie-off Options

There are three different options for Tie-off points:

- Hole – Connect directly to the base through a standard hole
- Lugs – Connect a little easier through standup lugs are welded to the base
- D-rings – Fall protection D-rings can be attached directly to the base easiest tie-off experience



Certifications & Standards

- All base designs have been tested to BS 8610:2017 Type A3

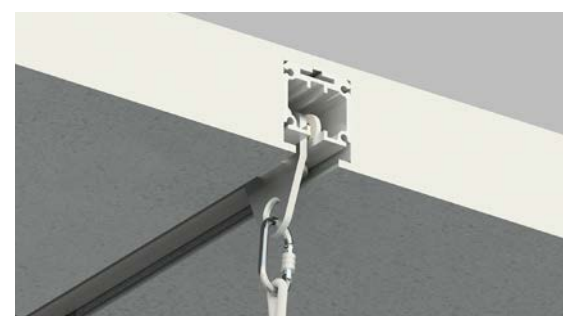
PRORAIL IT

Features & Overview

- Provides a completely integrated rail solution
- Ideal for two people working within a 3m bay for both working and rescue scenarios
- Allows for external colouring and coatings
- Functions with minimum exposed components
- Quick and easy to install and re-test
- Provides a wide range of mounting options

The ProRail IT system is a compact, high strength, highly concealable aluminum rail system that is fully rated and tested to BS; 8610:2017. The ProRail IT system can be installed externally or internally and can be almost completely concealed within cladding or other architectural features.

The ProRail IT system can navigate around corners, with standard corner units available from stock with a 600mm radius.



Colour & Finish

- As standard the ProRail IT Rail comes anodized to AA25 natural silver in accordance with ISO 7599. Powder coating is available for a wide range of RAL colours.
- ProRail IT travelers are available in stainless steel with an optional electropolished finish.

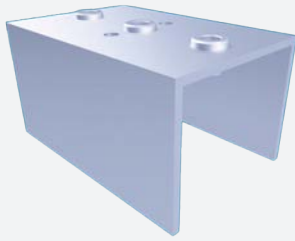
PRORAIL IT

Details & Options



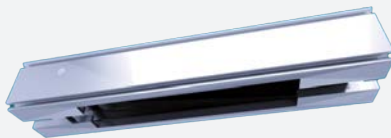
Installation details

- 3m centres
- 1m overhang past last fixing position
- Can be joined anywhere in the span
- Can be cut to any length required on site



Fitting

- Fitted to post with a single M12 fixing.
- Secured to intermediate plates with three M12 fixings when supported by a post
- Time-saving drill jigs included with install kit, no need to waste time trying to line up fixing holes
- Separate drill jig for fastener reinforcement plates and joining plates



Removable Traveler Options

- End pinning for captive travelers
- Removable end stops for "end out" traveler usage.
- 500mm Entry/Exit for "bottom out" traveler usage

Certifications & Standards

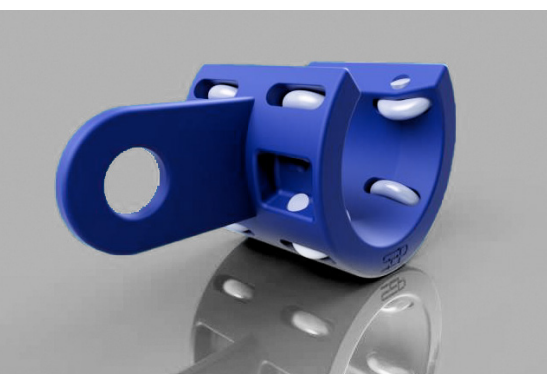
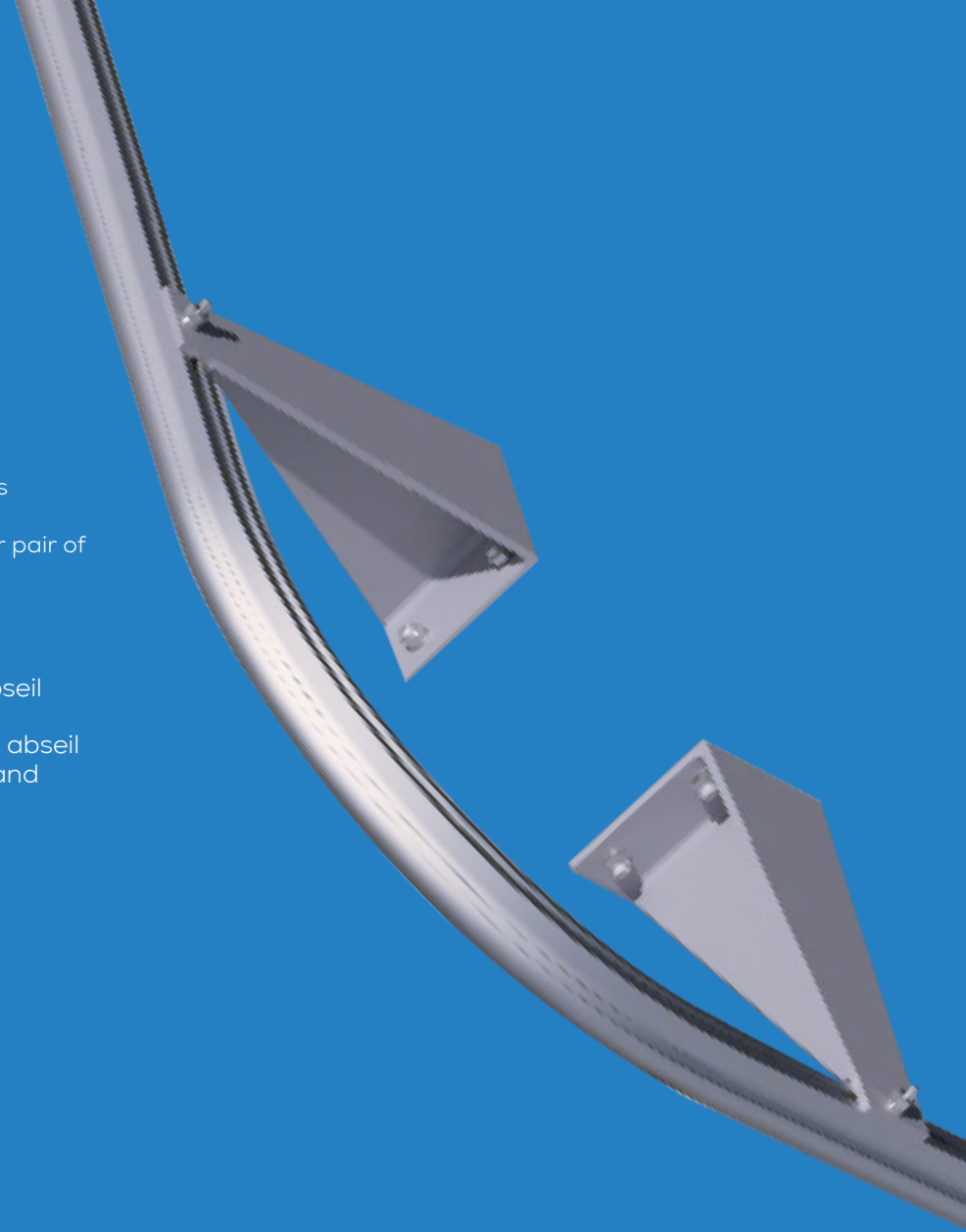
- Fully tested to BS 8610:2017 for 21kN ultimate load for 3 min
- Can be used for fall arrest and restraint to EN 795:2012
- Tested to an ultimate load of 5000lb to comply with overseas markets
- 250Kg SWL for lifting operations
- Certifications for each traveler and each rail job are available at request, and a certification for the system, as installed in its entirety should be made available by your installer

PRORAIL EX

Features & Overview

- Supports spans of up to 3m
- Supports up to 2 users per span
- Suitable for Type A A1-A5 applications
- Tested to an ultimate load of 21kN per pair of travelers to BS 8610:2017 Type A

ProRail EX is a lightweight, versatile abseil rail system designed for overhead and horizontal use. It is designed for direct abseil use as well as fall restraint, fall arrest and deviated abseil use.

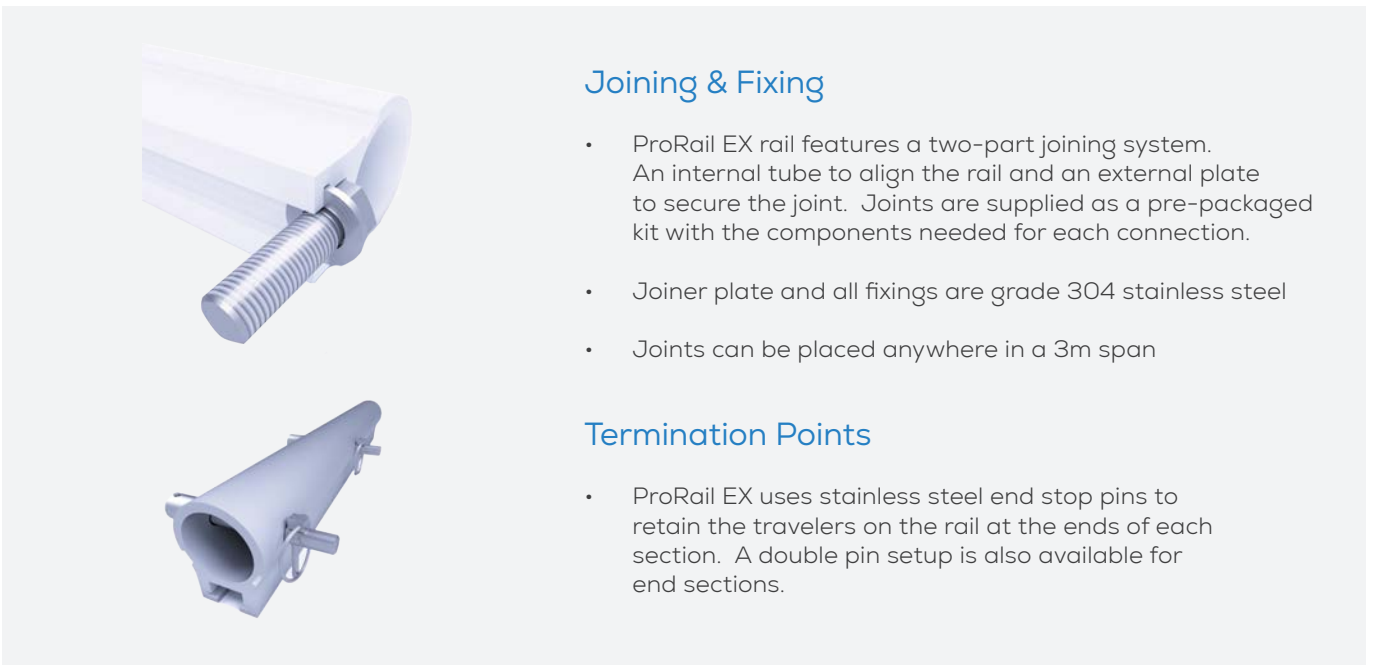


PRORAIL EX

Details & Options

Installation details

- ProRail EX travelers feature a single piece stainless steel body to provide corrosion resistance. The wheels use long-life bushings to ensure they are maintenance free and smooth running.
- All travelers are powder coated blue as standard
- Travelers are available for both vertical and horizontal applications

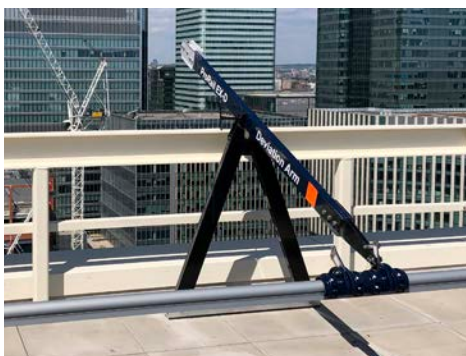


Joining & Fixing

- ProRail EX rail features a two-part joining system. An internal tube to align the rail and an external plate to secure the joint. Joints are supplied as a pre-packaged kit with the components needed for each connection.
- Joiner plate and all fixings are grade 304 stainless steel
- Joints can be placed anywhere in a 3m span

Termination Points

- ProRail EX uses stainless steel end stop pins to retain the travelers on the rail at the ends of each section. A double pin setup is also available for end sections.



Accessories

- The Deviation Arm connects directly to ProRail EX and can extend the access point beyond obstacles and weak parapets.

Certifications & Standards

- ProRail EX supports up to 2 users per span, and is tested to an ultimate load of 21kN per pair of travelers to BS 8610:2017 Type A, for A1-A5 applications.

Kee Safety Shanghai
上海市黄浦区延安东路588号，远洋商业大厦一期16AB
16AB Sino-Ocean Tower, 588 Yan An East Road Shanghai, China
Email: chnsales@keesafety.com, Telephone: +86 400 820 9261
Website: keesafety.cn

