



www.oxfordsafety.com



PitProtect



Installation guide for the PitProtect



Oxford Safety
Components

INNOVATIVE PATENTED SAFETY SOLUTIONS

PITPROTECT

SAFETY COVER FOR INSPECTION PITS

INSTALLATION GUIDE FOR THE PITPROTECT

NOTE A

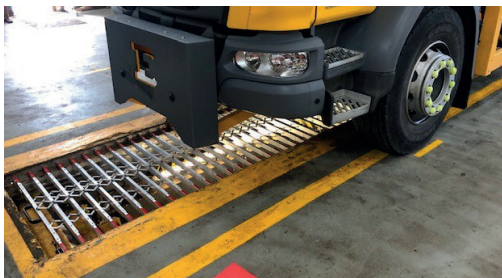
When vehicles are not present the cover **MUST** be deployed (extended over the full length of the pit) to prevent any person falling into the inspection pit.

NOTE B

A weekly inspection of the condition of the cover should be carried out and recorded by a competent person. Before each use of the pit, perform a visual inspection of the PitProtect. If any defects are seen, such as damage to the slats, report the situation to a supervisor immediately. Assess how to continue with the safe use of the pit. Repairs must be arranged promptly.



Note A & B Cover is deployed to prevent any fall into the pit. Make a formal weekly check of the condition of the cover.



Note C Ensure vehicle wheels are on the solid workshop floor.

NOTE C

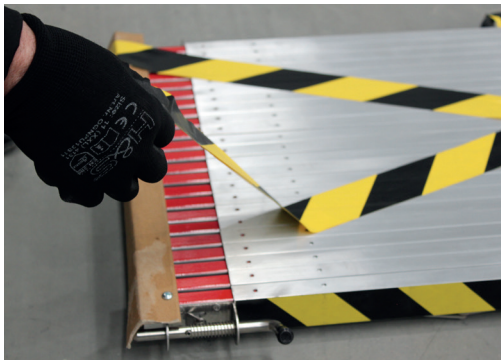
If all is in order, a vehicle can be driven into position over the pit for inspection or service work. Ensure that the wheels of the vehicle are on the solid workshop floor (and not on the lattice).



Open end of cover to access the pit via steps.

STEP 1

Remove adhesive tape installed in the shape of an X from the four ends of the cover (to allow the internal bars to become loose) do not remove the tape from the middle section at this stage.



Tape installed for transit purpose only.

STEP 2

Remove the fixing screws and location pins that are bagged and attached to the handle.



4 x location pins & 92 x screws.

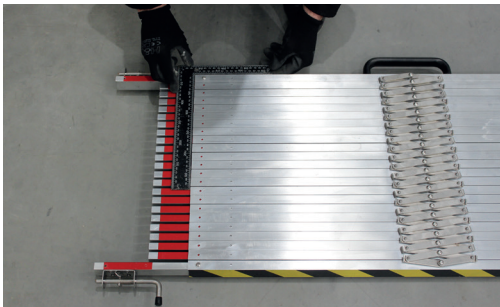
STEP 3

Measure the vehicle pit width at both ends and at 1 meter intervals to obtain an accurate measurement of the vehicle pit width.



STEP 4

Ensure that the main section of the cover is square, this can be achieved by placing a set square on the middle section.



All tape should be removed at this stage.

PLEASE NOTE:

Please allow a minimum void area of (5mm) per side for clearance, taking into consideration the narrowest point of the vehicle inspection pit.



Side support sizes will determine void size clearance.

STEP 5 A & B

Remove the cardboard end sections, extend the outer inner bars both sides to the required size and screw the two outer bars only with one screw at this stage.



STEP 5/A



STEP 5/B

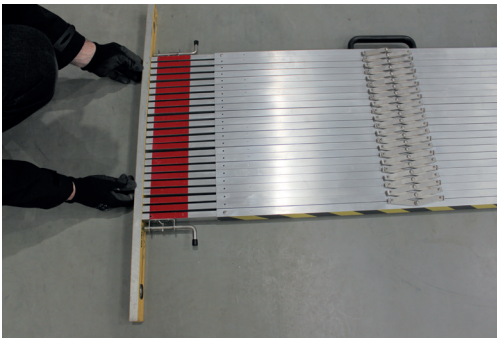
Only 4 x screws should be installed at this stage.

PLEASE NOTE:

If the vehicle inspection pit varies in width measurements considerably, you may be required to adjust each cover individually to accommodate or allow enough clearance for all covers to operate.

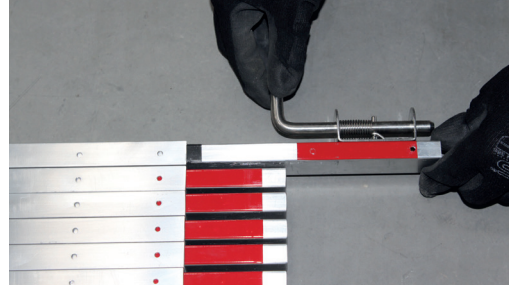
STEP 6

Now proceed to extend all inner bars at both ends to the required length, we recommend using a straight edge to ensure all bars are in-line and secure with single screw. Ensure all tapes are removed.



SAFETY NOTE:

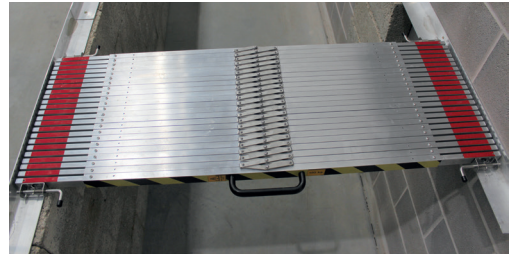
All the inner bars are marked with a black tape to highlight the maximum you can extend the bars.



Never extend bar beyond black mark.

STEP 7

Place the cover in the vehicle pit and check if the cover has the correct clearance (this can vary from 5mm + per side dependent on variations of pit width).



Check cover size at all points of vehicle pit length.

STEP 8

Install all remaining screws to all bars to ensure the covers are now a fixed item.



Each cover will have 4 rows of screws.

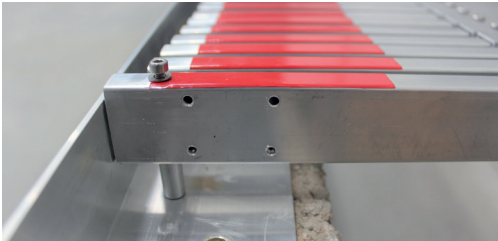
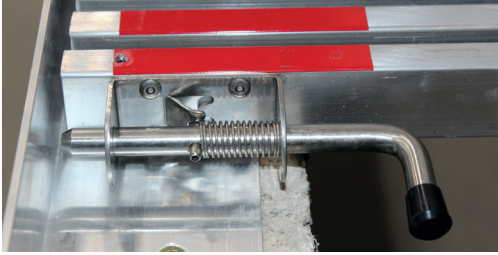
PLEASE NOTE:

When setting out the length of the covers, try to expand all the covers to the same length or to your requirements.

STEP 9

There are two options of securing the covers:

- A: Spring loaded bolt, these are attached to the covers and are simply released to locate the covers (used on a C channel side detail.)
- B: Vertical location pins, remove the spring loaded bolt (4 x screws) and place the location pin in the pre-drilled hole and secure.

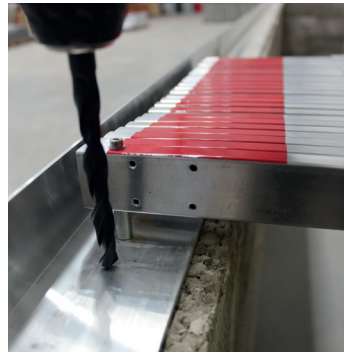


STEP 11

Position the first mat centrally and drill two (12mm) holes, either vertically for the location pins or horizontally for the spring loaded bolts. Ensure that suitable eye protection, ear protection, gloves, high visibility jackets and safety footwear are adhered to at all times when works are occurring.



Recommended 12mm hole for location pins.



Remove spring loaded bolts if vertical location pin required. Allow enough depth for location pin to fully insert.

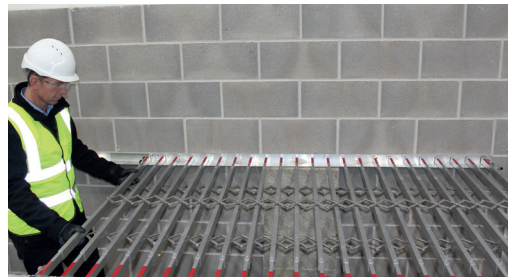
STEP 10

For securing the covers, choose the appropriate method and ensure the handle is at the access end. The recommended void between the end of the vehicle inspection pit and the PitProtect should be approximately (70mm).



STEP 12

Open the cover to the required length and repeat the drilling process at the far end. Then using the handle, push the cover to a fully closed position and then retract (10mm) back (thus allowing tolerance for build-up of debris) and repeat the drilling process.



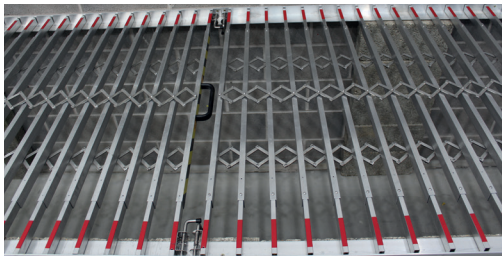
Every cover will have 6 x location holes. Ensure location pins are inserted at all times to prevent from slipping from vehicle pit.

PLEASE NOTE:

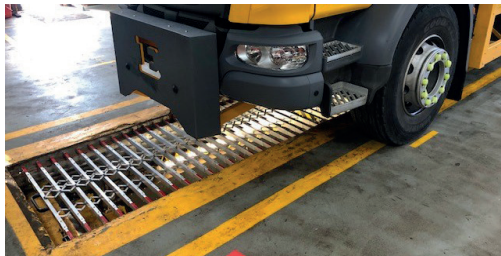
Each cover will have six location holes, drilled through the existing metal surround to provide an open and closed position.

STEP 13

Repeat process for the next cover ensuring the recommended void between covers is approximately (70mm).



Safety check. Ensure covers are straight & not twisted.



Robust yet lightweight inspection pit covers are easy and quick to deploy to protect pits.

Safety Note:

So that the PitProtect methods are clear, a vehicle is not always shown. In real life, the pit hazard must be protected by a vehicle, cover, or barrier at all times.

Do not drive the vehicle onto the PitProtect lattices; they are designed for personnel but are not designed to support the weight of a vehicle (or other equipment).

Photographs are without the vehicle in place over the pit in order to make retraction method clear. In real life, the pit must be protected by a vehicle or cover at all times.

Customer Services

Advice, on-site training, maintenance & repair services are available from our mobile teams across the UK, or from our base in Bicester near M40 motorway



Oxford Safety
Components

T +44 (0)1869 323282 E sales@oxfordsafety.com
3 Longlands Road . Lanton . Bicester . OX26 5AH

www.oxfordsafety.com