



SEPARATING PEOPLE FROM HAZARDS

KeeLine[®] The Engineered Lifeline Solution



- RIGOROUSLY TESTED TO MEET ALL APPLICABLE OSHA, CSA AND ANSI STANDARDS
- UNIQUE, COST EFFECTIVE DESIGN FOR QUICK AND EFFICIENT INSTALLATION
- MAXIMUM SPAN OF 39' ACCOMMODATES 3 USERS AT ONE TIME
- IMPROVED POST AND BASE PLATE FOR USE ON MULTIPLE ROOF TYPES



Reliable Performance

Tested. Trusted.

- Rigorously tested on built roofs
- Endorsed by 3rd-party safety validation
- In-depth training: hands-on and classroom instruction
- Certification by Kee Safety professionally-trained installers

Simple Design

Freedom to Work. Securely Attached.

The KeeLine® horizontal lifeline system is designed to provide workers with freedom of movement on the rooftop while securely attached to the lifeline at all times.

- Open design - nothing “hidden” in a closed container
- Stronger rivets, improved swage for enhanced safety
- Intuitive recertification process

Easy Integration

Configured to Fit.

KeeLine® uses 5/16” grade 316 stainless steel wire and allow spans of up to 39’ between posts and can be utilized by up to three users at any one time.

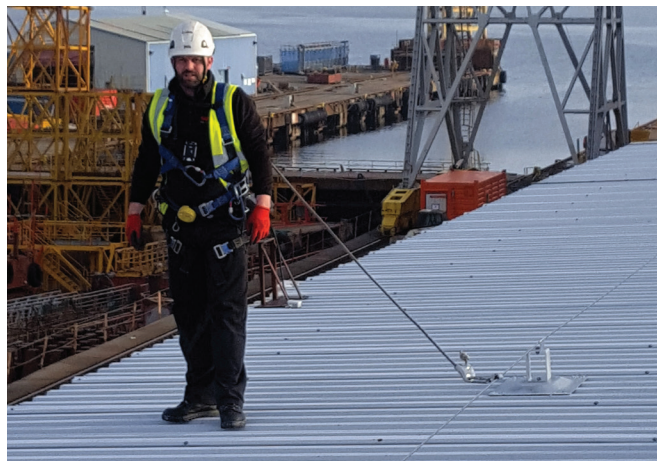
- Engineered for multiple roof types
- Accommodates corners and varying building shapes
- Non-penetrative engineering for water-proof rooftops

Cost Effective

Smart Personal Fall Protection.

The KeeLine® horizontal life line system is a flexible, cost effective option for working at height.

- Stainless steel components are low maintenance
- Galvanized finish for corrosion resistance
- Can be mounted directly to concrete, steel, brick or stonework
- Fast, easy installation



KeeLine® Features

- Third-party tested for safety and reliability
- Open framework: no hidden parts, no hidden defects
- Engineered for multiple roof types including membrane roofs
- Stainless steel system with galvanized components for durability

KeeLine® Benefits

- Reliability and peace of mind on the rooftop
- Corrosion resistant finish for long life
- Maximum span of 39’ allows 3 users at one time
- Accommodates corners and varying building shapes
- In-line shock absorber minimizes load in event of a fall

Establish an OSHA Compliant System

- Installation must be completed by a certified KeeLine installer*
- All KeeLine users must be properly trained to meet OSHA compliance
- In-depth KeeLine training is available through Kee Safety
- Requires yearly inspection for OSHA compliance

*Partnership Opportunities

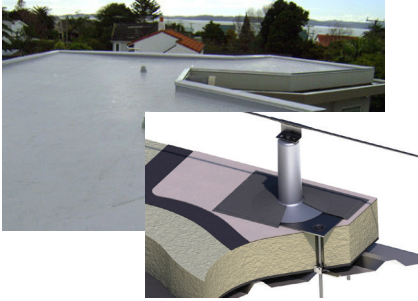
Interested in becoming a certified KeeLine installer?
Contact Kee Safety today: (877) 505 5003

KeeLine® Innovative Upright Post System

Engineered Safety for All Roof Types

KeeLine® incorporates a cutting-edge post and base plate design for use on membrane roofs. By utilizing the same range of brackets as standard roof systems, KeeLine can be installed quickly and easily.

Membrane Roof



Profiled Metal Sheet Roof



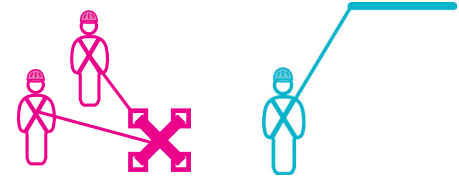
Standing Seam Roof



KeeLine® Overhead



Compliance



Hierarchy of Fall Protection

- ★★★★★ 1. Eliminate the Hazards
- ★★★★ 2. Collective Fall Protection [OSHA: Passive]
- ★★★ 3. Work Restraint [OSHA: Active]
- ★ 4. Personal Fall Arrest System

OSHA Compliance

- **OSHA Code 1910.140(c)(11-22)**
Work Restraint [Active]: Horizontal Life Lines

The employer must ensure that each horizontal lifeline: is designed, installed, and used under the supervision of a qualified person; and is part of a complete personal fall arrest system that maintains a safety factor of at least 2.

Restraint or Arrest? Work Restraint is Preferred.

A **Restraint System** (Active) is engineered to prevent a fall from occurring. The user cannot fall because they are actively restrained from reaching the edge of the roof.

A **Fall Arrest System** is designed so a fall is possible, but the fall is “arrested” or interrupted before the user comes in contact with the ground.

Meets International Safety Requirements

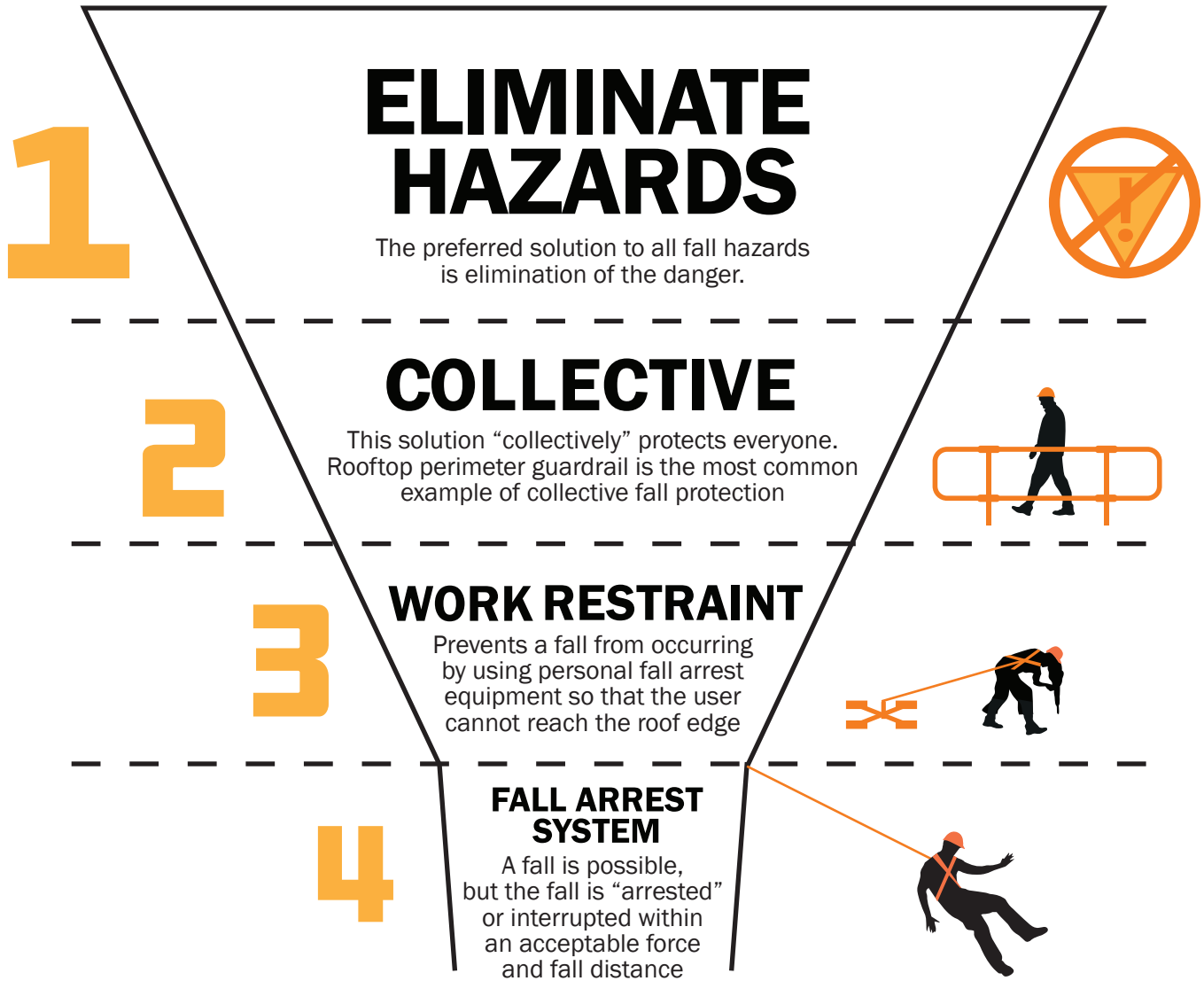
- KeeLine® in-line shock absorber limits end loads to structure
- Suitable for single or multiple span systems
- Spans of up to 100' in between supports
- Supports multiple users
- Higher pre-tension reduces line sag and cable deflection
- Durable electro-polished Grade 316 Stainless Steel brackets and traveller
- Two-wheeled traveller glides along the intermediate brackets
- Meets safety requirements of international standards



Hierarchy of Fall Protection

Depend on the Experts at Kee Safety

A truly comprehensive rooftop solution follows the Hierarchy of Fall Protection, the gold-standard of safety procedures. Our experts start by inspecting the roof site for potential fall hazards. From there, a complete system solution and recommendations that descend down the four levels of the hierarchy—from simple, sensible approaches for eliminating risks - all the way down to lifesaving personal protection systems.



Kee Safety uses the Hierarchy of Fall Protection to reduce risk on the roof. Originated by OSHA, the goal is to expertly evaluate, provide a comprehensive strategy, and install a rooftop solution to successfully and safely separate people from hazards.

Collective Systems require no additional training to use. Work Restraint and Fall Arrest Systems both require a high level of user competency, training and additional inspection to be used effectively.



Canada
Kee Safety, Ltd.
40 North Rivermede Road, Units 6 - 7
Concord, Ontario L4K 2H3

Tel: (905) 669 1494
Toll Free: (877) 505 5003

www.keesafety.ca

Kee Klamp, Kee Lite, Kee Stainless, KeeGuard, Kee Dome, Kee Hatch, Kee Mark, Kee Access, Kwik Kit, Kee Anchor, Weightanka, Wireanka, KeeLine, Kee Walk and Kee Projects are all registered trademarks of Kee Safety Ltd, Beam Clamp, and Box Bolt are all registered trademarks of Access Technologies Ltd, a subsidiary of Kee Safety International Ltd. While every effort has been made to ensure the accuracy of the information contained in this brochure, Kee Safety, Inc cannot be held responsible for any errors or omissions. Kee Safety, Inc reserves the right to alter or withdraw products without prior notice. Kee Safety, Inc does not accept responsibility for any loss or damage arising from improper use of its products.

Copyright 2019 Kee Safety, Inc. All Rights Reserved.