



Simple solutions for shop fittings

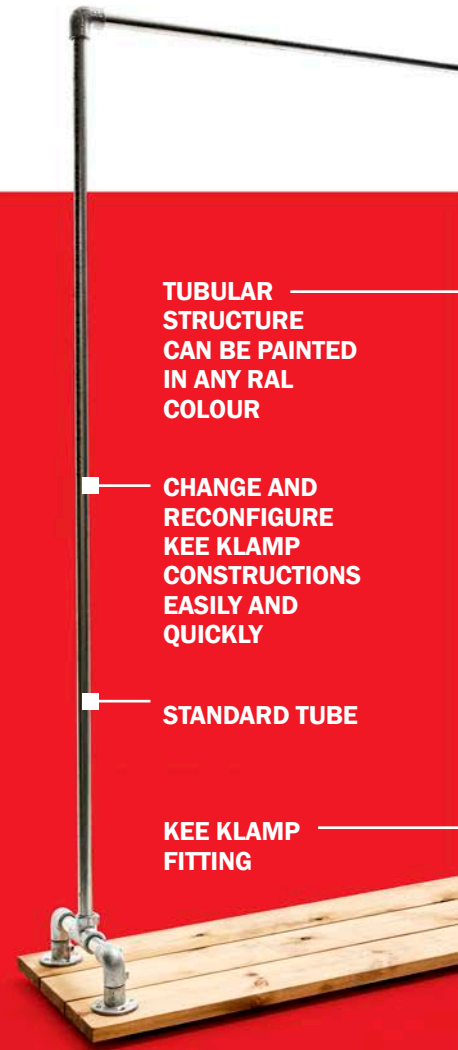
keesafety.sg



A well-designed shop can create a positive shopping experience for customers. Different shops communicate different brand values, attracting the right customers to their stores. Retailers use the store environment to reflect their brand, showcase their products and build appeal and loyalty with shoppers.

If you're seeking a raw industrial look, using KEE KLAMP fittings is the ideal solution. The KEE KLAMP range of tubular fittings from Kee Safety provides the perfect combination of retail form and function, helping to store and display products effectively, whilst creating an attractive, contemporary, urban styling for shopping outlets.

KEE KLAMP has previously been installed in many retail shops around the world, including Christian Dior and Ralph Lauren outlets in Singapore, Liberty Department Store in London, Citadium Department Store in Paris, Levi Strauss shop in Switzerland, Brandy Melville stores in Australia and many H&M stores and Superdry stores throughout several countries to name a few. The KEE KLAMP fittings have been used for clothing rails and racks, in storerooms and for shop window displays.



TUBULAR STRUCTURE CAN BE PAINTED IN ANY RAL COLOUR

CHANGE AND RECONFIGURE KEE KLAMP CONSTRUCTIONS EASILY AND QUICKLY

STANDARD TUBE

KEE KLAMP FITTING

Create The Urban Retail Vibe with KEE KLAMP

KEE KLAMP fittings can be used to quickly and easily build a wide variety of tubular structures for front and back of store applications in a choice of different and easily adjustable configurations.

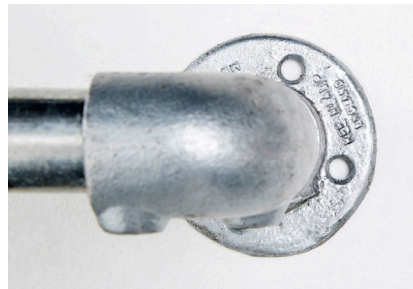
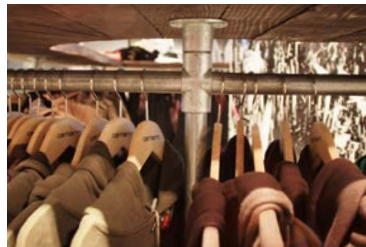
These include

- Clothing racks and rails
- Window displays
- Product shelving
- Tables
- Store furniture
- In-store kiosks
- Fitting room frames
- Frames for mirrors, artwork or graphic panels

This versatility ensures that retailers can use KEE KLAMP to create a completely unified and modular store environment for storage and display which can be adapted, as required.

Because KEE KLAMP tube fittings offer a modular solution, structures can also be assembled, changed and re-assembled very quickly and easily as needed, which is a great advantage in keeping the retail experience fresh, exciting and engaging for customers.





Retail stores around the world have used KEE KLAMP fittings to display their products. Tables, shelves, and clothing racks can all be designed and built using KEE KLAMP tube fittings.

KEE KLAMP structures are designed with ease of installation in mind. KEE KLAMP components can be installed using a standard hex key, with each fitting incorporating an internal set screw to lock the respective fitting safely and securely onto the tube to create a strong, stable and safe display structure. Since no special tools are needed, retailers can change and reconfigure KEE KLAMP constructions easily and quickly.

Expert Design & Technical Support Service

Kee Safety provides technical support to customers and can be contacted for questions about the use of KEE KLAMP fittings. Please call us on +65 6385 4166 or send an email to sgsales@keesafety.com.

Use in industry

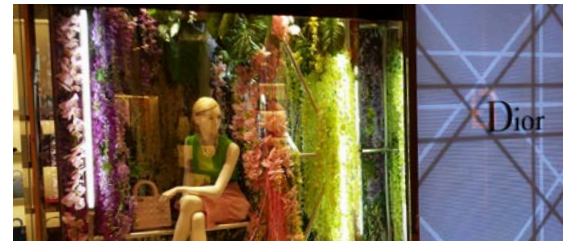
Ralph Lauren Industrial Style Retail Display

KEE KLAMP fittings were used in Singapore to showcase a Ralph Lauren retail display. The tubes and fittings have been painted to match the existing theme, incorporating signage, door and window trim, and carpet.



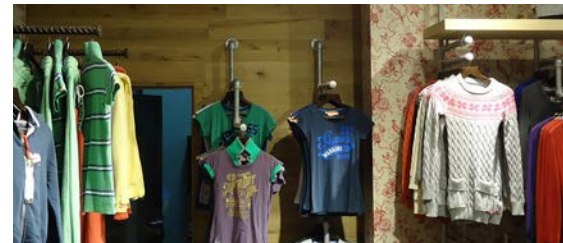
Christian Dior Window Display

KEE KLAMP fittings and tube were used for the launch of Christian Dior Spring/Summer Collection to create modern and sleek window displays in Marina Bay Sands, Singapore. It proves that KEE KLAMP fits well into modern and exclusive environments.



Clothing Racks for Superdry Stores

An international casual clothing supplier has refurbished a number of their stores worldwide with KEE KLAMP clothing racks, creating a strong industrial style.



Shop Window at a Burberry Store

KEE KLAMP fittings and tube were used to create display structures for a Burberry store at the Emporium Shopping Mall in Bangkok. The mall houses world-renowned designer brands.



Display Systems for a French Department Store

KEE KLAMP fittings were used in the construction of clothing rails and wall fixtures at the Citadium Department Store in Paris. Citadium is well known as a temple to fashion. The megastore showcases 250 international and French brands.



Customised Retail Display Structures

Vision Display, who specialises in Window Display, In-store Display and other Retail Store needs, has been using KEE KLAMP on many of their projects. Recently they used KEE KLAMP when constructing the Longchamp LGP Pop Up Stand at Paragon Shopping Centre in Singapore.



Kee Safety Singapore Pte Ltd
38 Ang Mo Kio Industrial Park 2
#01-03, Singapore 569511
T: +65 6385 4166
E: sgsales@keesafety.com
keesafety.sg

KEE KLAMP is a trademark of Kee Safety Limited. Whilst every effort has been made to ensure the accuracy of the information contained in this brochure Kee Safety Singapore Pte Ltd cannot be held responsible for any errors or omissions. Kee Safety Singapore Pte Ltd reserves the right to alter or withdraw products without prior notice. Kee Safety Singapore Pte Ltd accepts no responsibility for any loss or damage arising from improper use of their products.

©2021 Kee Safety Singapore Pte Ltd. All Rights Reserved.