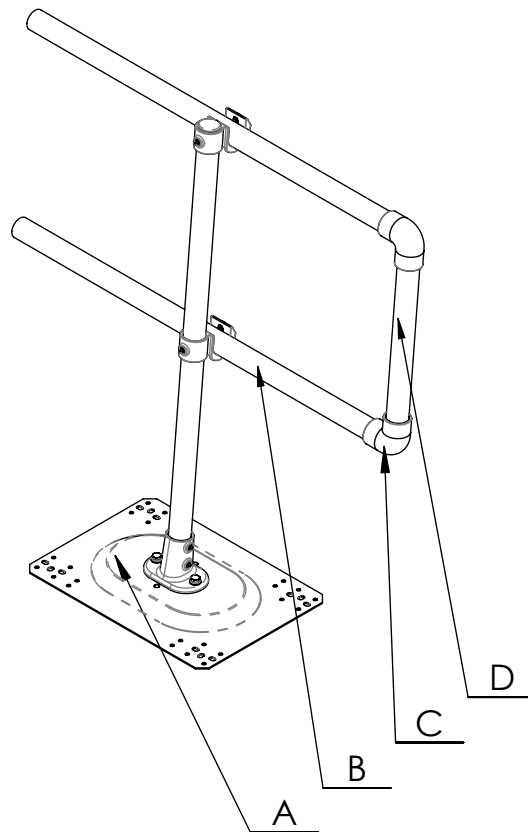




SAFETY AT THE HIGHEST LEVEL

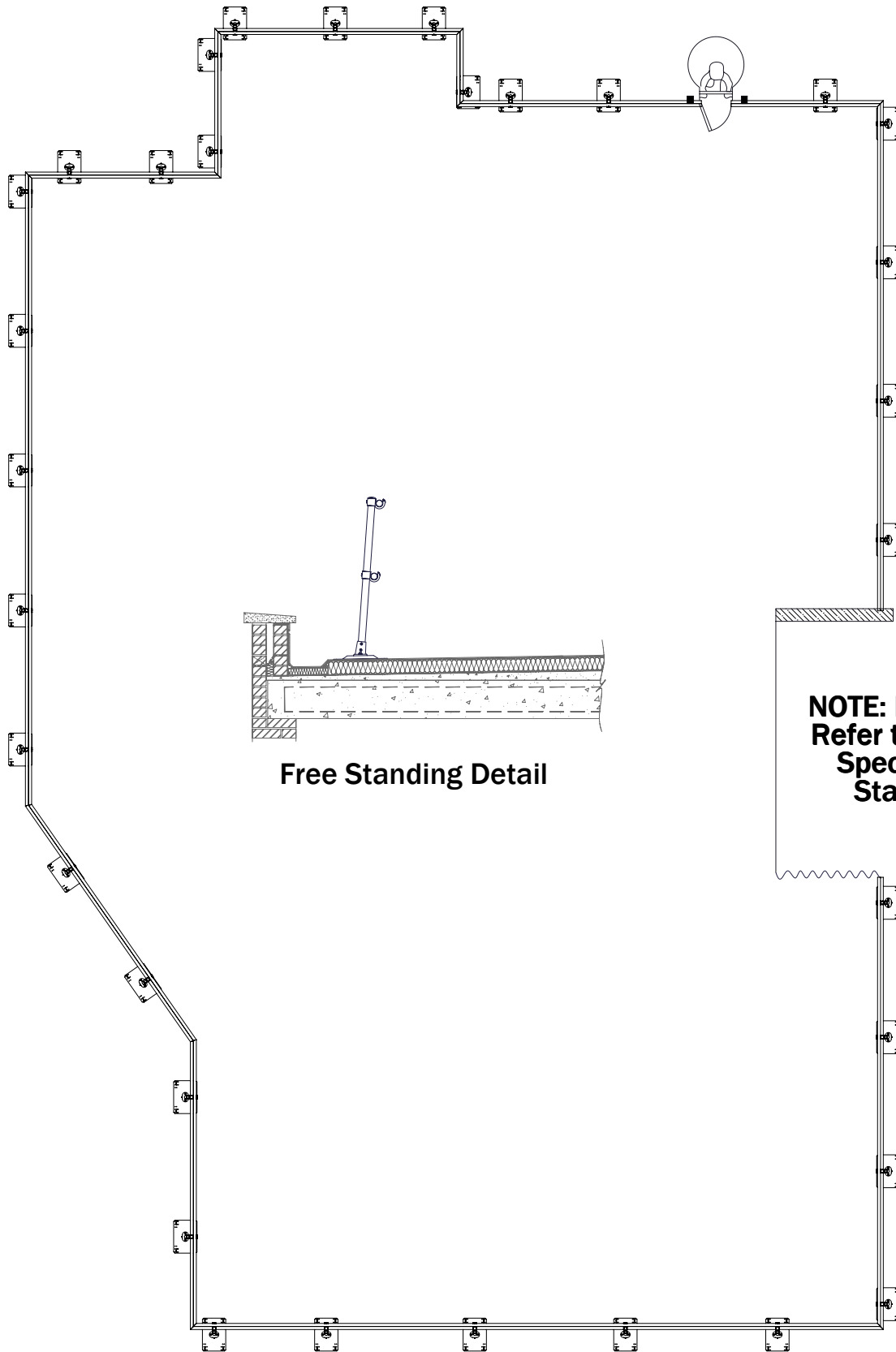
# KeeGuard Topfix Technical Datasheet Pack



**Revision 2**  
Issued June 2017

# Technical Datasheet No: 0001

## TYPICAL TOPFIX KEEGUARD EDGE PROTECTION SYSTEM LAYOUT TO EN 13374 & 14122-3



### SYSTEM SPECIFICATION

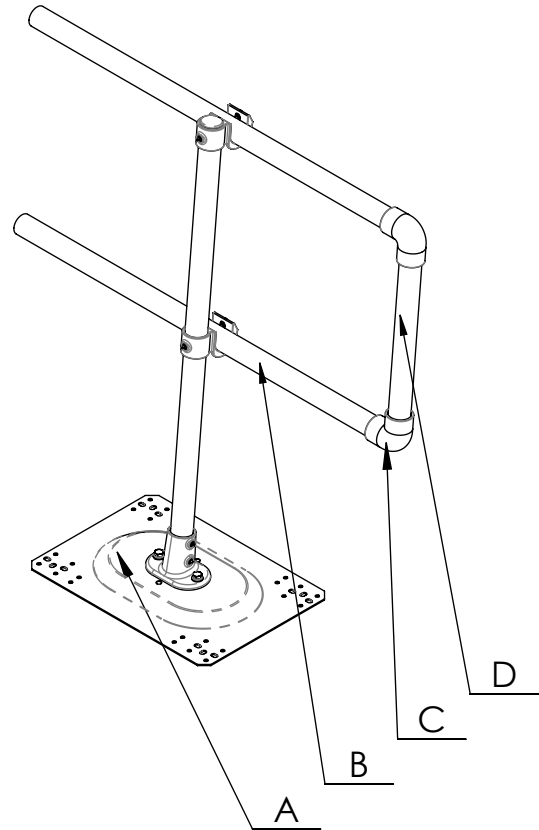
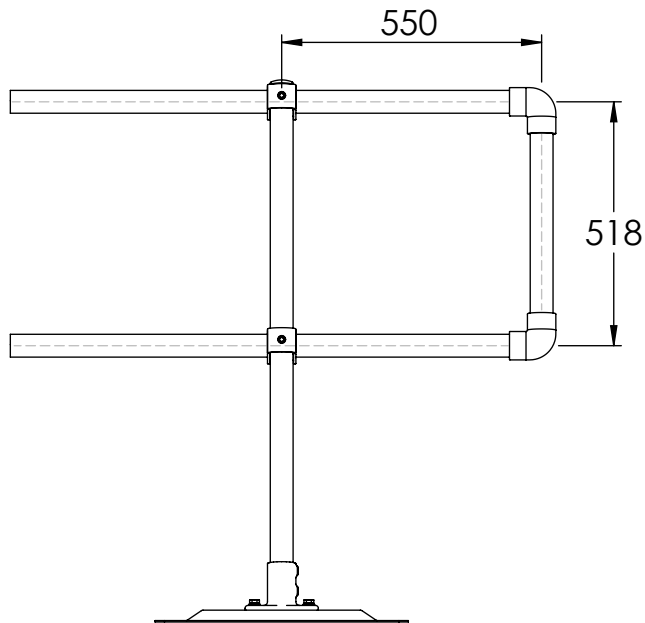
Material	
Finish	
Weight	

Issue Date: 30/05/2017

Issue No: 1

# Technical Datasheet No: 0002

## TOPFIX UNRESTRAINED "D" RETURN DETAIL



ITEM NO.	PART NO.	DESCRIPTION	QTY.	LENGTH
A	KGTFLEG10	KEEGUARD TOPFIX PROFILE METAL SHEETING UPRIGHT ASSEMBLY	1	
B	TUBE SIZE 8	TUBE 8 - 2 - G	2	1100
C	001580010	15-8 90° ELBOW	2	
D	TUBE SIZE 8	TUBE 8 - 2 - G	1	468

### APPLICATION

All systems consist of galvanised/aluminium tubing joined together using the KEE KLAMP method of connection. TOPFIX, raked, radiused and base feet plate, giving the system its strength & stability.

### COMPONENT SPECIFICATION

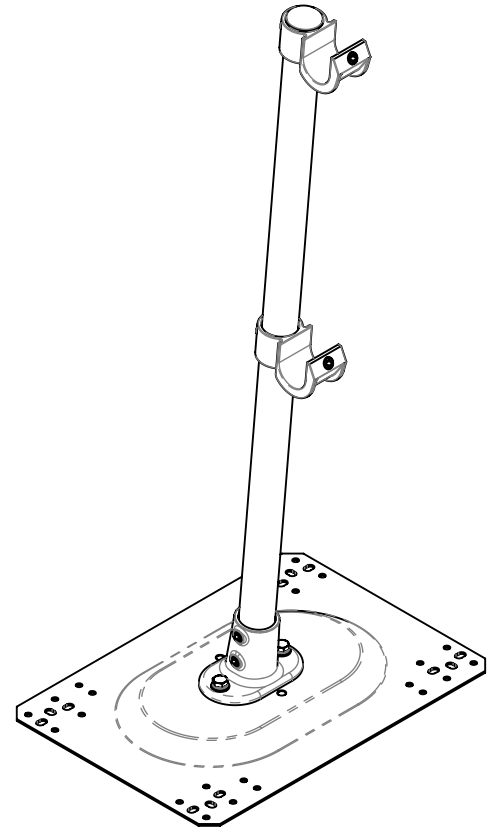
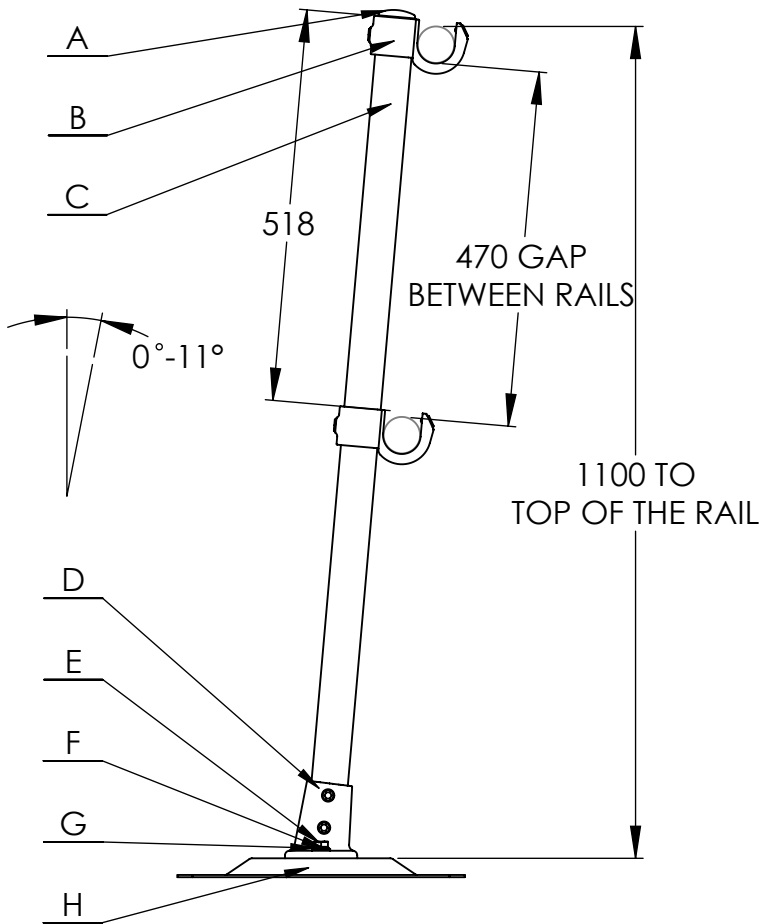
Material	Carbon Steel / Malleable Cast Iron / PVC
Finish	Galvanised to BS EN ISO 1461 / Natural
Weight	

# Technical Datasheet No: 0003

## KEEGUARD TOPFIX PROFILE METAL SHEETING UPRIGHT ASSEMBLY

Part No: KGTFLEG10

Short Part No: KGTFU1



ITEM NO.	PART NO.	DESCRIPTION	QTY.	LENGTH
A	007780040	77-8 PLASTIC PLUG	1	
B	013580010	135-8 KEE GUARD II KLAMP CASTING	2	
C	KGA228010	TUBE 8 - S - G @ 1100mm x 4mm	1	1100
D	006780010	67-8 ANGLE FLANGE	1	
E	511M12030150	M12 X 30 HEXAGON HEAD SET SCREW	2	
F	531M12000150	M12 A4 SS FLAT WASHER FORM A	2	
G	531M12000250	M12 SPRING WASHER TYPE A	2	
H	KGTF 003	KGTF 003 KEE GUARD TOP FIX BASE PLATE ASSEMBLY	1	

### APPLICATION

The standard upright base fitting allows for 0-11 degree vertical adjustment and four fixing holes in the base plate allows it to be used in the most beneficial plane to suit the roof profile. The system is available in both galvanised steel and aluminium finish (aluminium system utilizes additional support brackets).

### COMPONENT SPECIFICATION

Material	Steel tubing to EN 10255 - 4mm / Malleable cast iron to BS 1562 / Carbon Steel
Finish	Galvanised to BS EN ISO 1461/ HDG
Weight	14.52

Issue Date: 30/05/2017

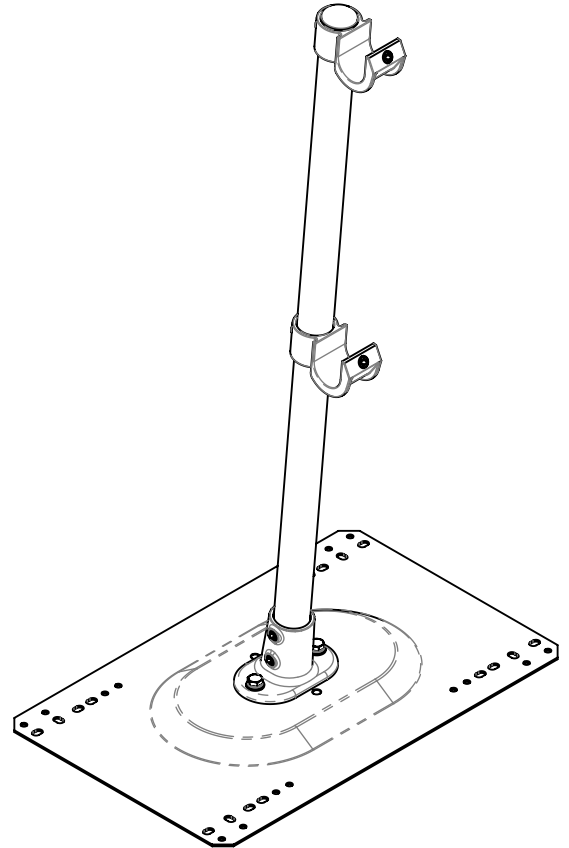
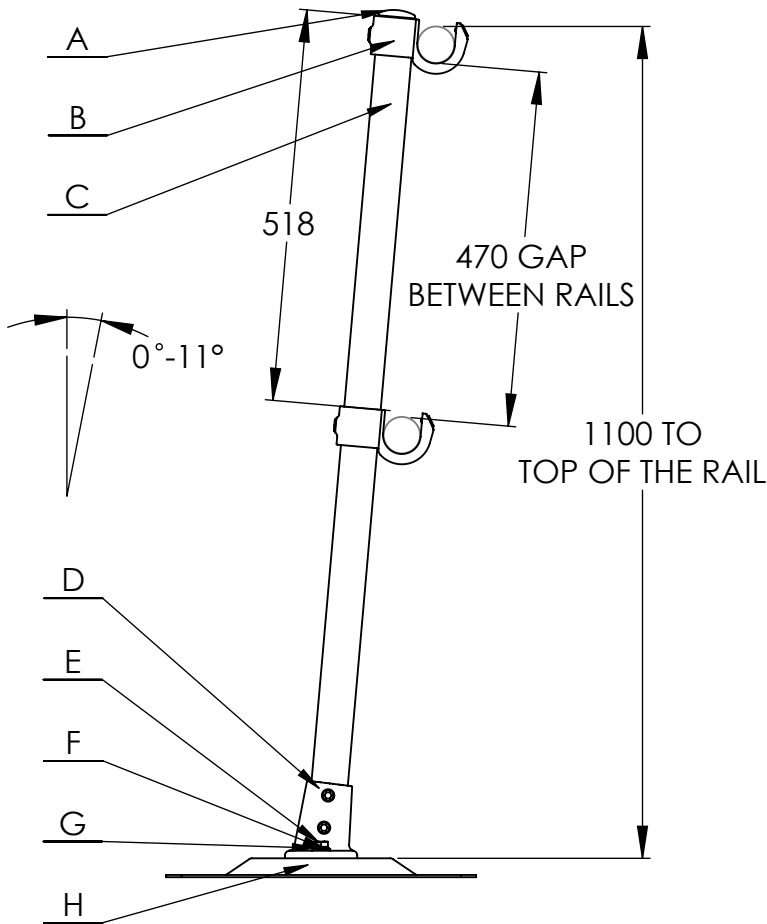
Issue No: 1

# Technical Datasheet No: 0004

## KEEGUARD TOPFIX US PROFILE METAL SHEETING UPRIGHT ASSEMBLY

Part No: KGTFUSA10

Short Part No: KGTFU2



ITEM NO.	PART NO.	DESCRIPTION	QTY.	LENGTH
A	007780040	77-8 PLASTIC PLUG	1	
B	013580010	135-8 KEE GUARD II KLAMP CASTING	2	
C	KGA228010	TUBE 8 - S - G @ 1100mm x 4mm	1	1100
D	006780010	67-8 ANGLE FLANGE	1	
E	511M12030150	M12 X 30 HEXAGON HEAD SET SCREW	2	
F	531M12000150	M12 A4 SS FLAT WASHER FORM A	2	
G	531M12000250	M12 SPRING WASHER TYPE A	2	
H	KGTF 004	KGTF 004 KEE GUARD US TOP FIX BASE PLATE ASSEMBLY	1	

### APPLICATION

The standard upright base fitting allows for 0-11 degree vertical adjustment and four fixing holes in the base plate allows it to be used in the most beneficial plane to suit the roof profile. The system is available in both galvanised steel and aluminium finish (aluminium system utilizes additional support brackets).

### COMPONENT SPECIFICATION

Material	Steel tubing to EN 10255 - 4mm / Malleable cast iron to BS 1562 / Carbon Steel
Finish	Galvanised to BS EN ISO 1461/ HDG
Weight	14.43

Issue Date: 30/05/2017

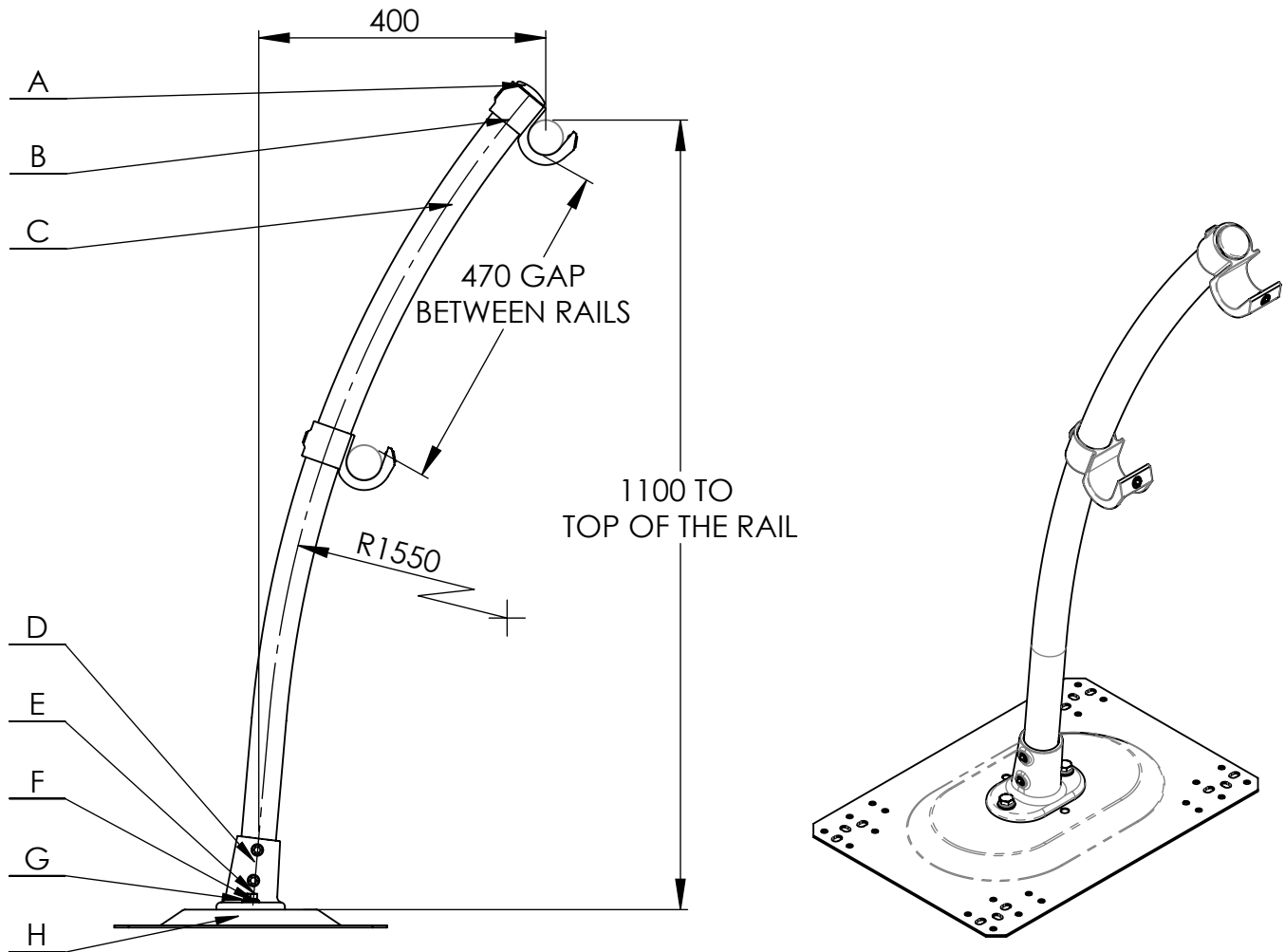
Issue No: 1

# Technical Datasheet No: 0005

## KEEGUARD TOPFIX PROFILE METAL SHEETING RADIUSSED UPRIGHT ASSEMBLY

Part No: KGTFR0010

Short Part No: KGTFR-U



ITEM NO.	PART NO.	DESCRIPTION	QTY.	LENGTH
A	007780040	77-8 PLASTIC PLUG	1	
B	013580010	135-8 KEE GUARD II KLAMP CASTING	2	
C	KGA412330	TUBE 8 - 4 - A @1290 x 4mm RADIUSSES KG LITE	1	1290
D	006780010	67-8 ANGLE FLANGE	1	
E	511M12030150	M12 X 30 HEXAGON HEAD SET SCREW	2	
F	531M12000150	M12 A4 SS FLAT WASHER FORM A	2	
G	531M12000250	M12 SPRING WASHER TYPE A	2	
H	KGTF 003	KGTF 003 KEE GUARD TOP FIX BASE PLATE ASSEMBLY	1	

### APPLICATION

This component allows the system to be radiused and gently curved back towards the roof slope and provides some height adjustment to the system. The Vertical Support Legs are produced in steel - 48.3mm external diameter.

### COMPONENT SPECIFICATION

Material	Steel tubing to EN 10255 - 4mm / Malleable cast iron to BS 1562 / Carbon Steel
Finish	Galvanised to BS EN ISO 1461/ HDG
Weight	15.04

Issue Date: 30/05/2017

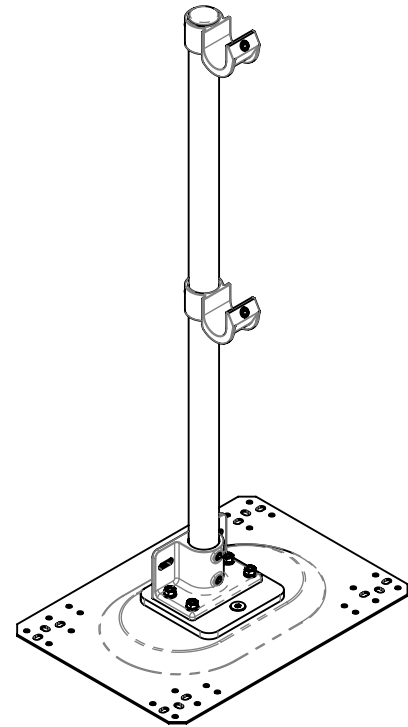
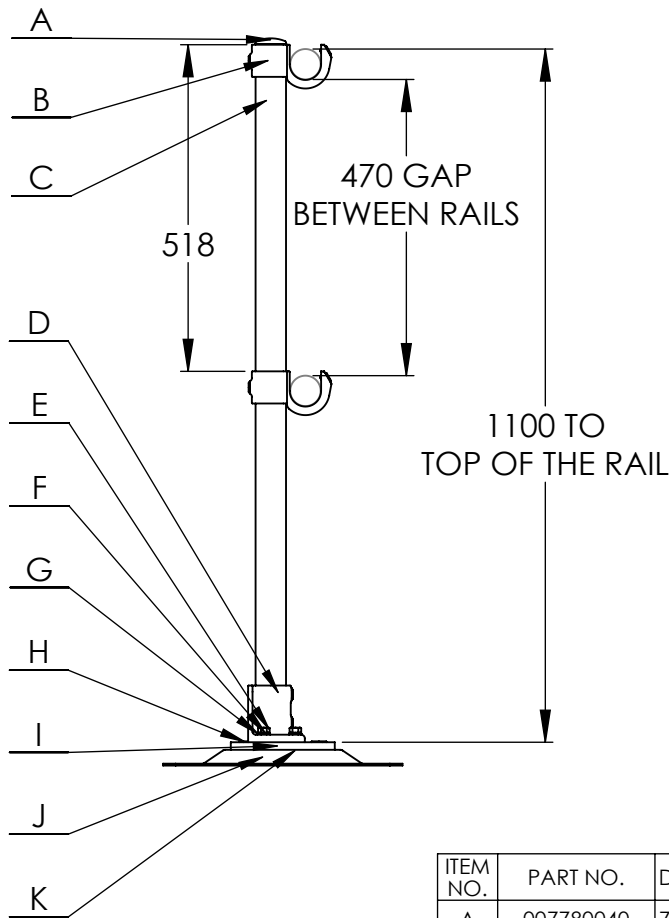
Issue No: 1

# Technical Datasheet No: 0006

## KEEGUARD TOPFIX PROFILE METAL SHEETING UPRIGHT ASSEMBLY

Part No: KGTFLEG49

Short Part No: KGTF49



ITEM NO.	PART NO.	DESCRIPTION	QTY.	LENGTH
A	007780040	77-8 PLASTIC PLUG	1	
B	013580010	135-8 KEE GUARD II KLAMP CASTING	2	
C	KGA228010	TUBE 8 - S - G @ 1100mm x 4mm	1	1100
D	006980010	69-8 RAILING FLANGE WITH TOEBOARD ADAPTOR	1	
E	WW1210110	WW1210 - M10 FULL NUT	4	
F	WW1320110	WW1320 - M10 SPRING WASHER	4	
G	531M10000150	M10 FLAT WASHER FORM A A4-70 S/S	4	
H	511M12030250	M12 x 30 CSK HEAD SOCKET SCREW	2	
I	KGTF69010	KGTF69 KEE GUARD TOPFIX KK69 ADAPTER	1	
J	KGTF 003	KGTF 003 KEE GUARD TOP FIX BASE PLATE ASSEMBLY	1	
K	511M10035250	M10 x 35 CSK HEAD SOCKET SCREW	4	

### APPLICATION

The standard upright base fitting allows for 0-11 degree vertical adjustment and four fixing holes in the base plate allows it to be used in the most beneficial plane to suit the roof profile. The system is available in both galvanised steel and aluminium finish (aluminium system utilizes additional support brackets).

### COMPONENT SPECIFICATION

Material	Steel tubing to EN 10255 - 4mm / Malleable cast iron to BS 1562 / Carbon Steel
Finish	Galvanised to BS EN ISO 1461/ HDG
Weight	18.44

Issue Date: 30/05/2017

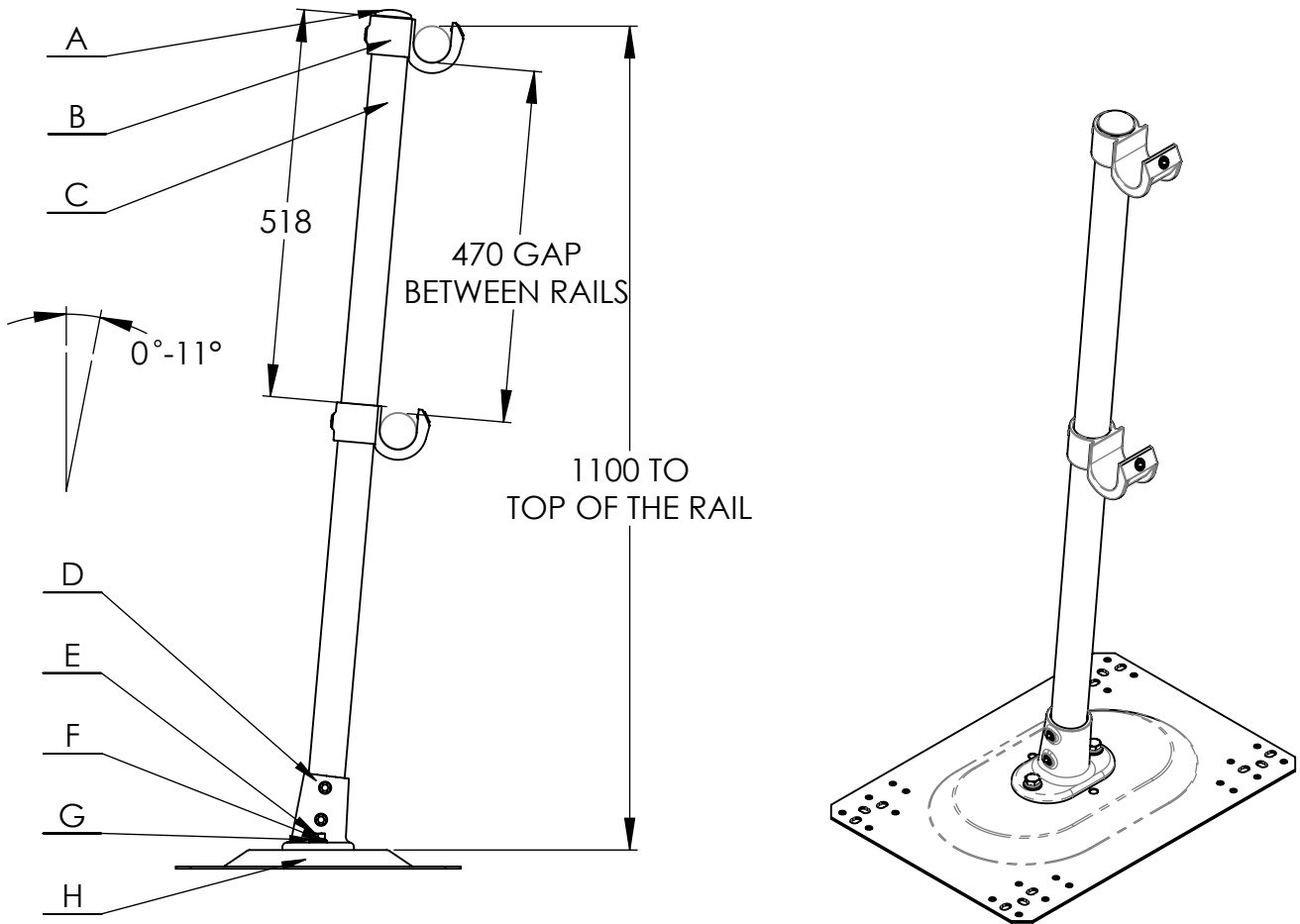
Issue No: 1

# Technical Datasheet No: 0007

## KEEGUARD TOPFIX PROFILE METAL SHEETING UPRIGHT ASSEMBLY

Part No: KGTFLEG29

Short Part No: KGTF29



ITEM NO.	PART NO.	DESCRIPTION	QTY.	LENGTH
A	007780040	77-8 PLASTIC PLUG	1	
B	013580010	135-8 KEE GUARD II KLAMP CASTING	2	
C	KGA228310	Ø 48,3 x 2,9 EN10255 GALV @ 1100mm	1	1100
D	006780010	67-8 ANGLE FLANGE	1	
E	511M12030150	M12 X 30 HEXAGON HEAD SET SCREW	2	
F	531M12000150	M12 A4 SS FLAT WASHER FORM A	2	
G	531M12000250	M12 SPRING WASHER TYPE A	2	
H	KGTF 003	KGTF 003 KEE GUARD TOP FIX BASE PLATE ASSEMBLY	1	

### APPLICATION

The standard upright base fitting allows for 0-11 degree vertical adjustment and four fixing holes in the base plate allows it to be used in the most beneficial plane to suit the roof profile. The system is available in both galvanised steel and aluminium finish (aluminium system utilizes additional support brackets).

### COMPONENT SPECIFICATION

Material	Steel tubing to EN 10255 - 2,9mm / Malleable cast iron to BS 1562 / Carbon Steel
Finish	Galvanised to BS EN ISO 1461/ HDG
Weight	13.22

Issue Date: 30/05/2017

Issue No: 1

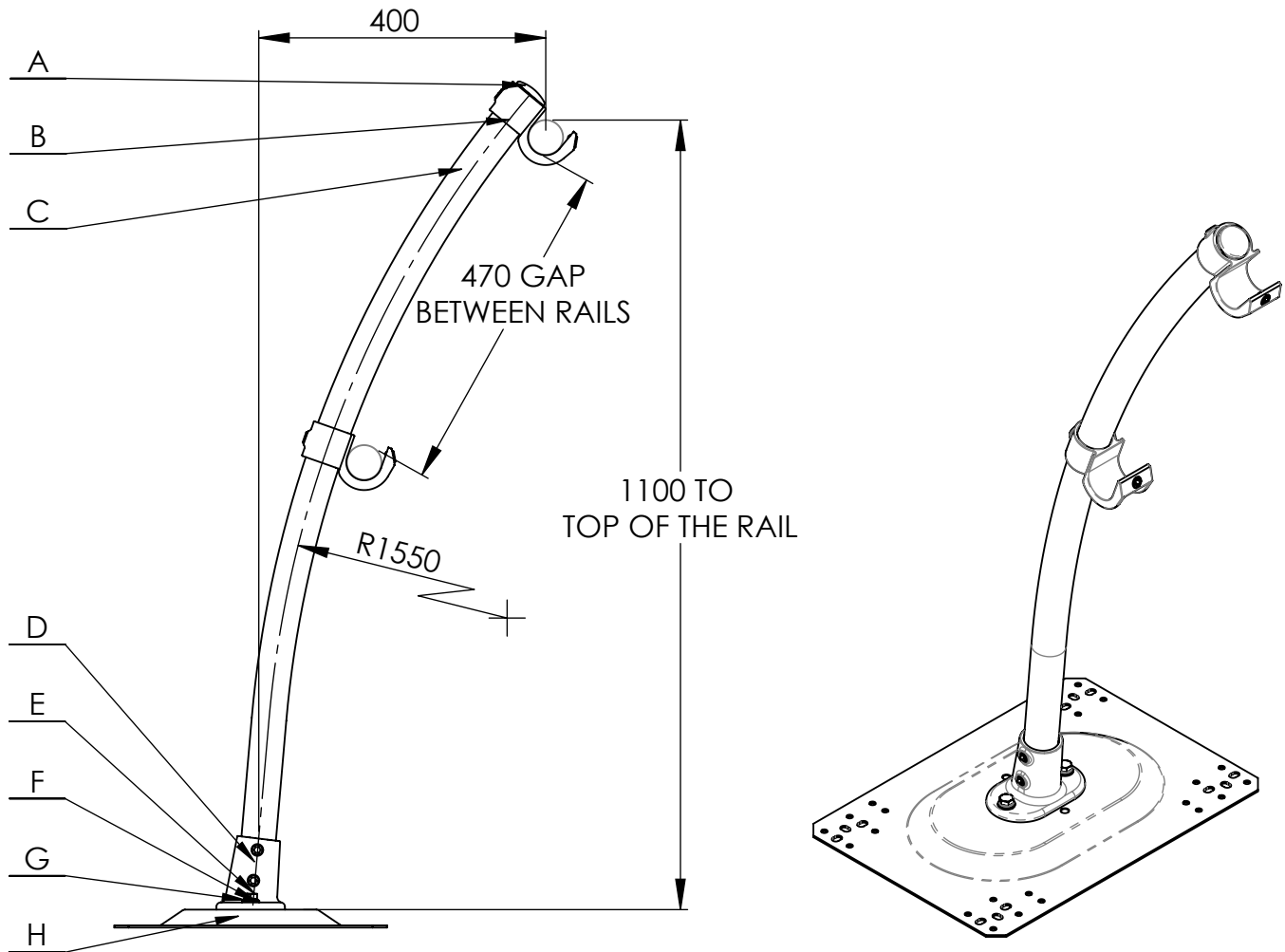


# Technical Datasheet No: 0008

## KEEGUARD TOPFIX PROFILE METAL SHEETING RADIUSSED UPRIGHT ASSEMBLY

Part No: KGTFR2910

Short Part No: KGTF-U29



ITEM NO.	PART NO.	DESCRIPTION	QTY.	LENGTH
A	007780040	77-8 PLASTIC PLUG	1	
B	013580010	135-8 KEE GUARD II KLAMP CASTING	2	
C	8310	TUBE 8 - 2,9 - A @1290 x 2,9mm RADIUSSES	1	1290
D	006780010	67-8 ANGLE FLANGE	1	
E	511M12030150	M12 X 30 HEXAGON HEAD SET SCREW	2	
F	531M12000150	M12 A4 SS FLAT WASHER FORM A	2	
G	531M12000250	M12 SPRING WASHER TYPE A	2	
H	KGTF 003	KGTF 003 KEE GUARD TOP FIX BASE PLATE ASSEMBLY	1	

### APPLICATION

This component allows the system to be radiussed and gently curved back towards the roof slope and provides some height adjustment to the system. The Vertical Support Legs are produced in steel - 48.3mm external diameter.

### COMPONENT SPECIFICATION

Material	Steel tubing to EN 10255 -2,9mm / Malleable cast iron to BS 1562 / Carbon Steel
Finish	Galvanised to BS EN ISO 1461/ HDG
Weight	13.60

Issue Date: 30/05/2017

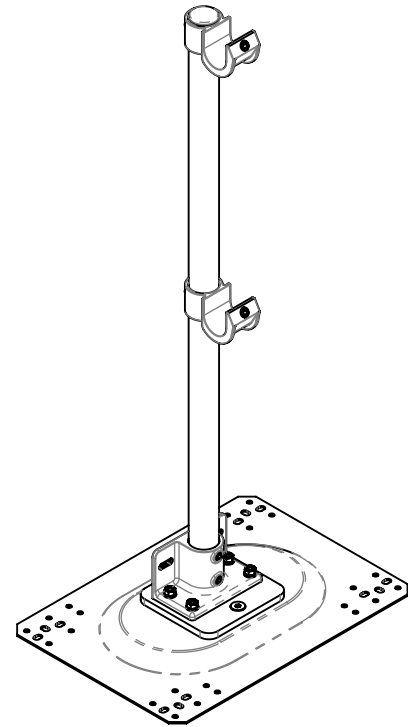
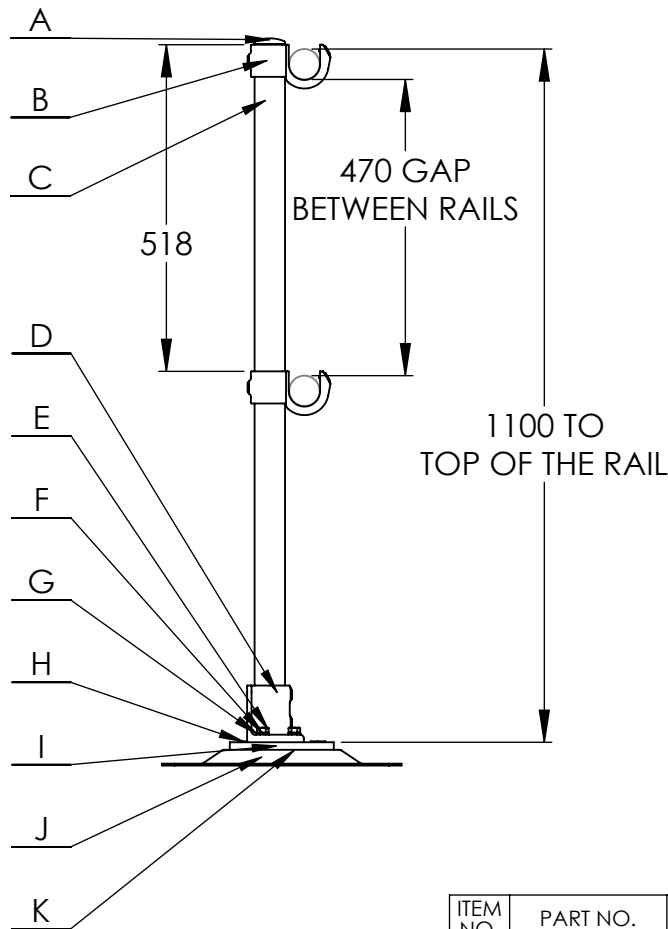
Issue No: 1

# Technical Datasheet No: 0009

## KEEGUARD TOPFIX PROFILE METAL SHEETING UPRIGHT ASSEMBLY

Part No: KGTFLEG69

Short Part No: KGTF69



ITEM NO.	PART NO.	DESCRIPTION	QTY.	LENGTH
A	007780040	77-8 PLASTIC PLUG	1	
B	013580010	135-8 KEE GUARD II KLAMP CASTING	2	
C	KGA228310	Ø 48,3 x 2,9 EN10255 GALV @ 1100mm	1	1100
D	006980010	69-8 RAILING FLANGE WITH TOEBOARD ADAPTOR	1	
E	WW1210110	WW1210 - M10 FULL NUT	4	
F	WW1320110	WW1320 - M10 SPRING WASHER	4	
G	531M10000150	M10 FLAT WASHER FORM A A4-70 S/S	4	
H	511M12030250	M12 x 30 CSK HEAD SOCKET SCREW	2	
I	KGTF69010	KGTF69 KEE GUARD TOPFIX KK69 ADAPTER	1	
J	KGTF 003	KGTF 003 KEE GUARD TOP FIX BASE PLATE ASSEMBLY	1	
K	511M10035250	M10 x 35 CSK HEAD SOCKET SCREW	4	

### APPLICATION

The standard upright base fitting allows for 0-11 degree vertical adjustment and four fixing holes in the base plate allows it to be used in the most beneficial plane to suit the roof profile. The system is available in both galvanised steel and aluminium finish (aluminium system utilizes additional support brackets).

### COMPONENT SPECIFICATION

Material	Steel tubing to EN 10255 - 2,9mm / Malleable cast iron to BS 1562 / Carbon Steel
Finish	Galvanised to BS EN ISO 1461/ HDG
Weight	17.14

Issue Date: 30/05/2017

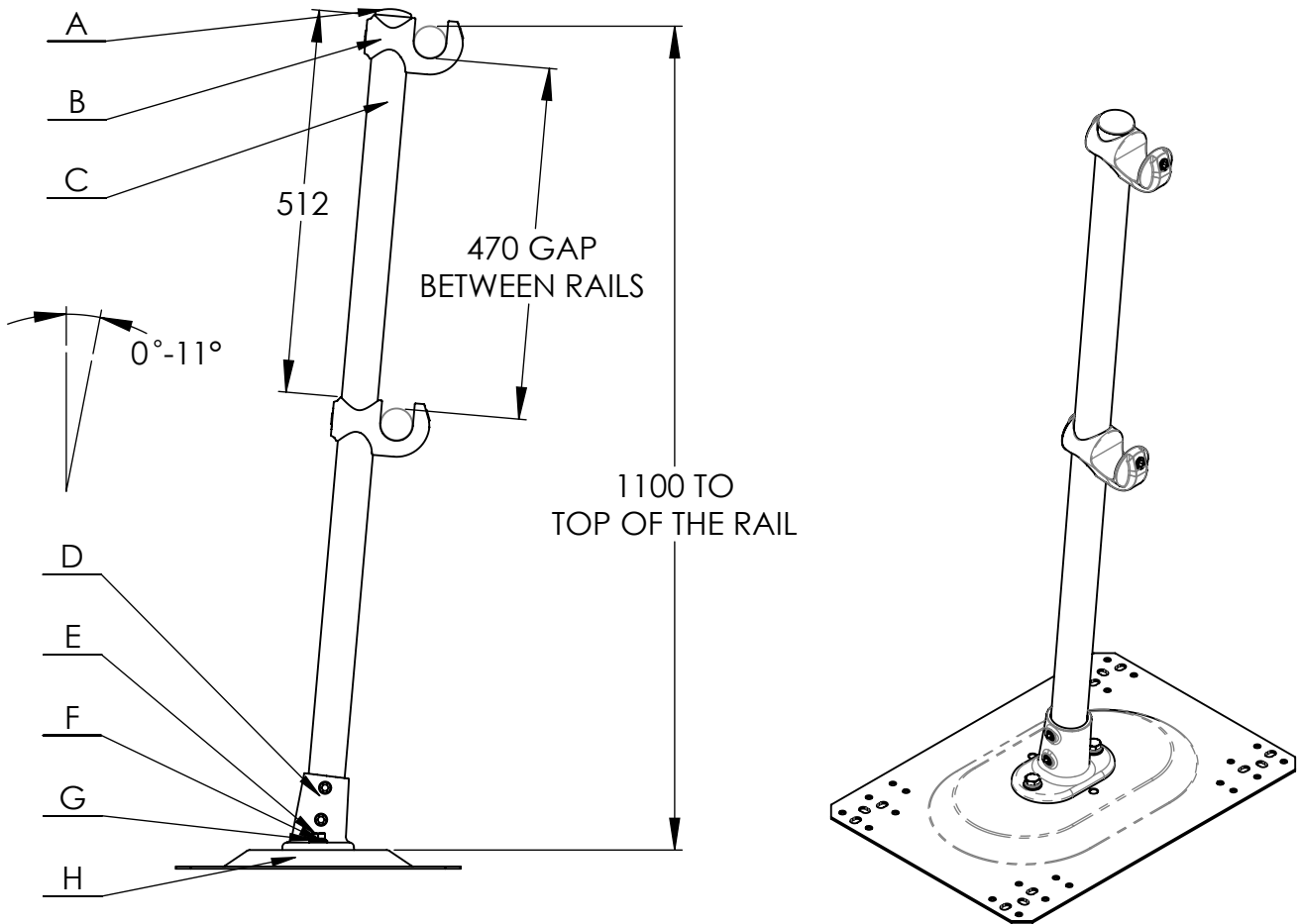
Issue No: 1

# Technical Datasheet No: 0010

## KEEGUARD TOPFIX PROFILE METAL SHEETING UPRIGHT ASSEMBLY

Part No: KGTFLEG30

Short Part No: KGTF-AL



ITEM NO.	PART NO.	DESCRIPTION	QTY.	LENGTH
A	007780040	77-8 PLASTIC PLUG	1	
B	L13587030	L135-87 CLAMP-ON CROSSOVER	2	
C	KGA228010	ALUMINIUM TUBE $\varnothing$ 48,3 x 2,850mm @ 1100mm	1	1100
D	006780010	67-8 ANGLE FLANGE	1	
E	511M12030150	M12 X 30 HEXAGON HEAD SET SCREW	3	
F	531M12000150	M12 A4 SS FLAT WASHER FORM A	3	
G	531M12000250	M12 SPRING WASHER TYPE A	3	
H	KGTF 003	KGTF 003 KEE GUARD TOP FIX BASE PLATE ASSEMBLY	1	

### APPLICATION

The standard upright base fitting allows for 0-11 degree vertical adjustment and four fixing holes in the base plate allows it to be used in the most beneficial plane to suit the roof profile. The system is available in both galvanised steel and aluminium finish (aluminium system utilizes additional support brackets).

### COMPONENT SPECIFICATION

Material	Aluminium Silicon Magnesium Alloy / Carbon Steel
Finish	Natural / HDG
Weight	10.13

Issue Date: 30/05/2017

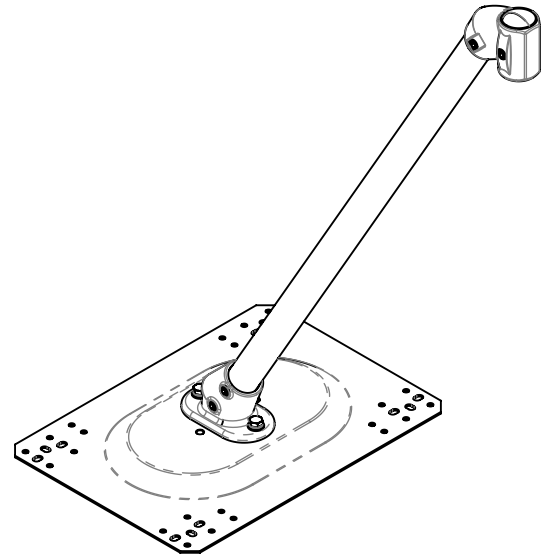
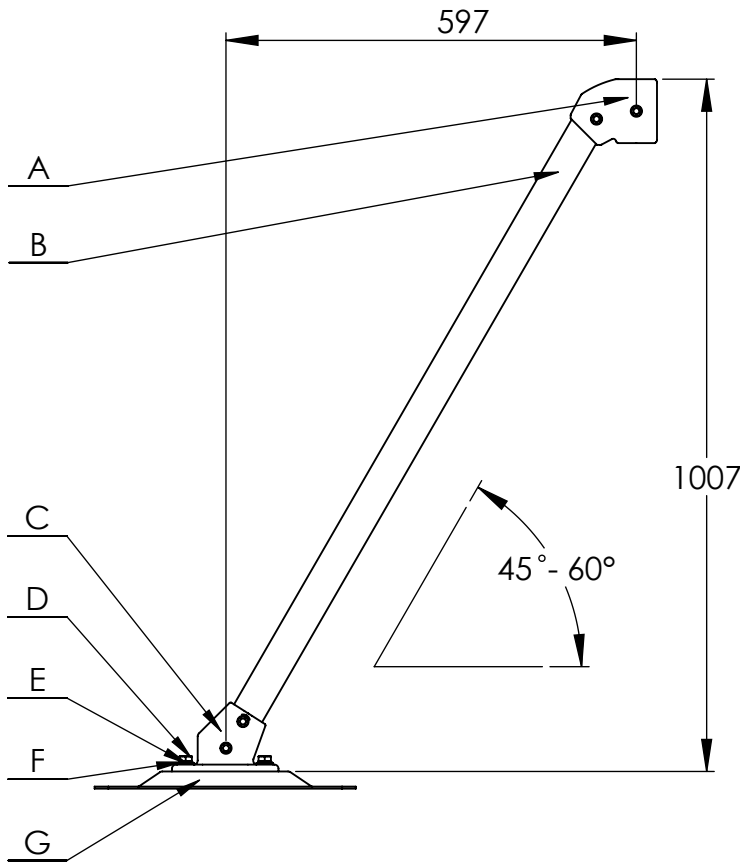
Issue No: 1

# Technical Datasheet No: 0011

## KEEGUARD TOPFIX PROFILE METAL SHEETING BRACE ASSEMBLY

Part No: KGTFBTA30

Short Part No: KGTF-ALB



ITEM NO.	PART NO.	DESCRIPTION	QTY.	LENGTH
A	L02980030	L29-8 30-60 deg SINGLE SOCKET TEE	1	
B	KGA228010	ALUMINIUM TUBE $\varnothing$ 48,3 x 2,850mm @ 1100mm	1	1100
C	006380010	63-8 ANGLE BASE FLANGE	1	
D	511M12030150	M12 X 30 HEXAGON HEAD SET SCREW	2	
E	531M12000150	M12 A4 SS FLAT WASHER FORM A	2	
F	531M12000250	M12 SPRING WASHER TYPE A	2	
G	KGTF 003	KGTF 003 KEE GUARD TOP FIX BASE PLATE ASSEMBLY	1	

### APPLICATION

The standard upright base fitting allows for 45-60 degree vertical adjustment and four fixing holes in the base plate allows it to be used in the most beneficial plane to suit the roof profile. The system is available in both galvanised steel and aluminium finish (aluminium system utilizes additional support brackets).

### COMPONENT SPECIFICATION

Material	Aluminium Silicon Magnesium Alloy / Carbon Steel
Finish	Natural / HDG
Weight	9.74

Issue Date: 30/05/2017

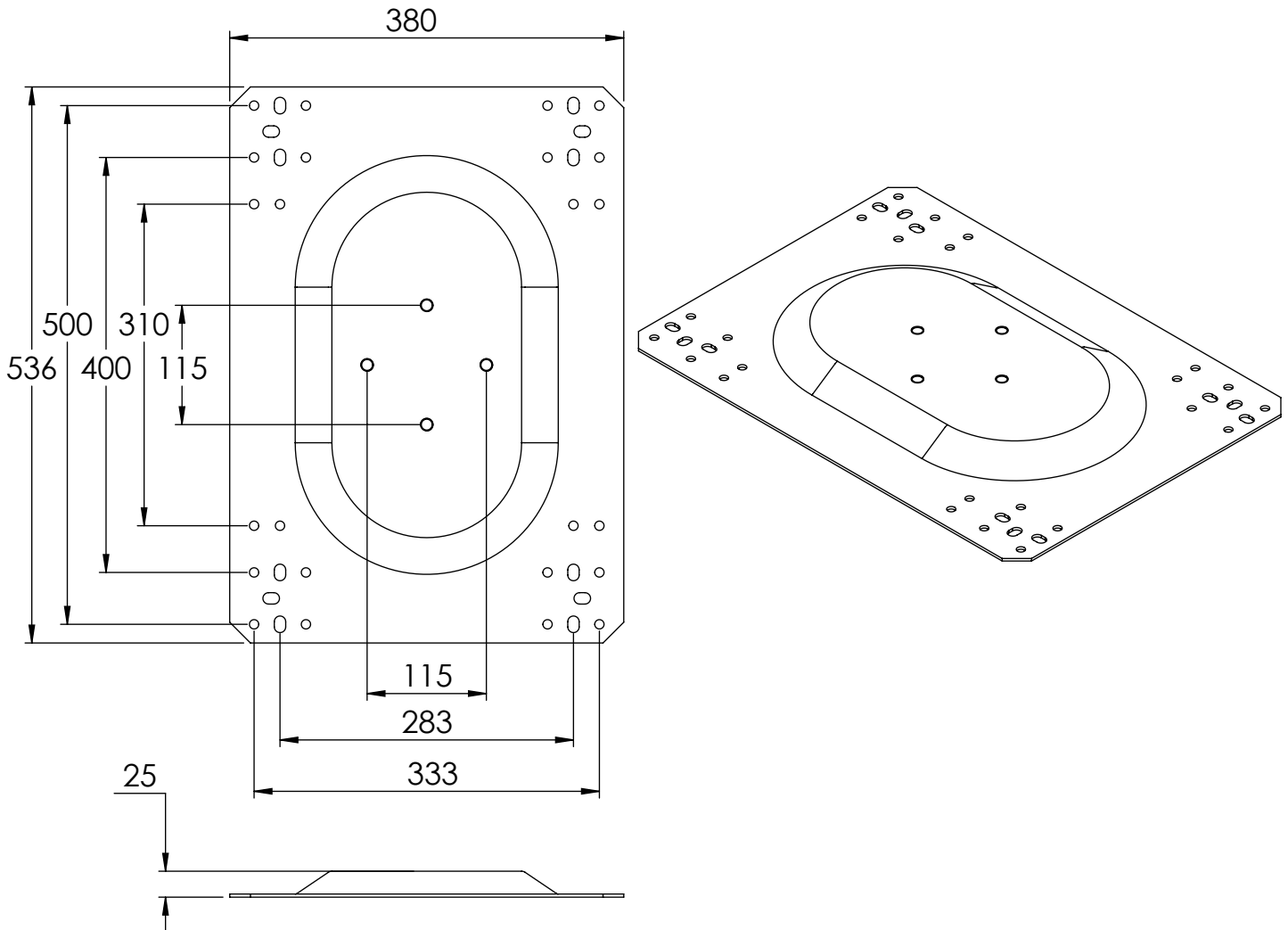
Issue No: 1

# Technical Datasheet No: 0012

KGTF 003 KEE GUARD TOP FIX BASE PLATE ASSEMBLY

Part No: KGTF 003

Short Part No: KGTF 003



## APPLICATION

This plate provides a method of connecting the system to a metal roof structure.

## COMPONENT SPECIFICATION

Material	Galvanised Steel
Finish	Galvanised to BS EN ISO 1461
Weight	6.60

Issue Date: 30/05/2017

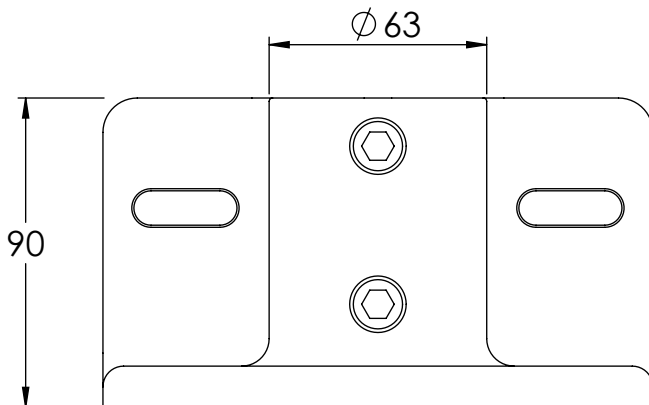
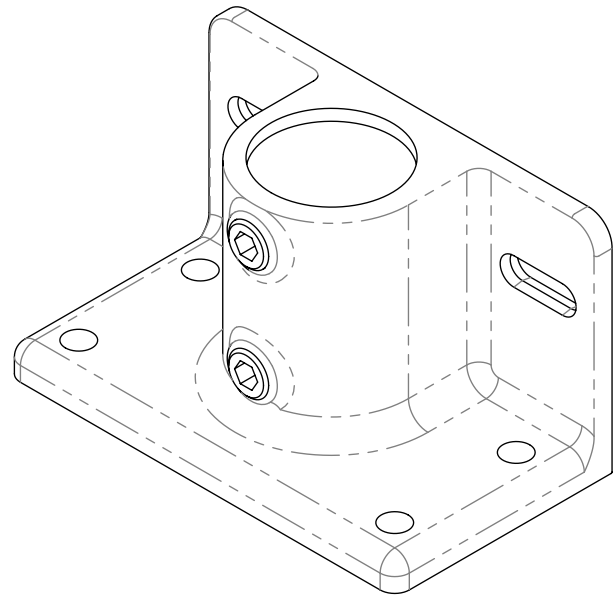
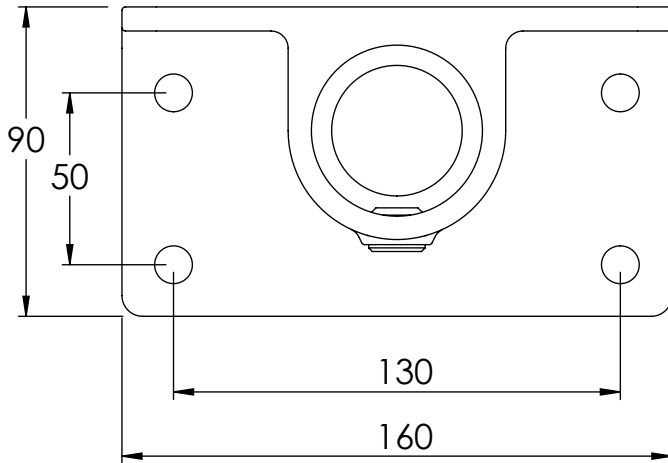
Issue No: 1

# Technical Datasheet No: 0013

69-8 RAILING FLANGE WITH TOEBOARD ADAPTOR

Part No: 006980010

Short Part No: 69-8



## APPLICATION

This component provides the means of connecting the Support Leg to the Base Plate. The component is also used to terminate the system against a facade.

## COMPONENT SPECIFICATION

Material	Malleable Cast Iron to BS 1562
Finish	Galvanised to BS EN ISO 1461
Weight	2.50

Issue Date: 30/05/2017

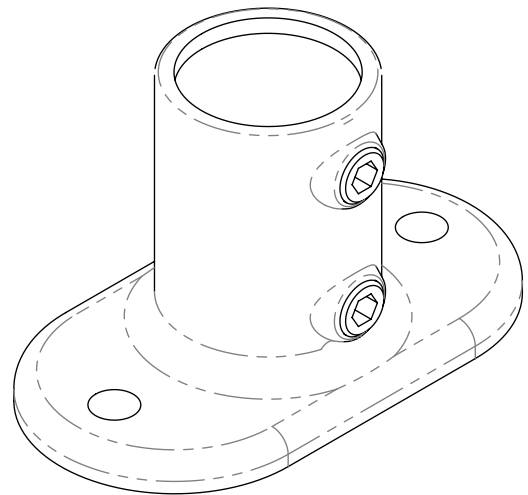
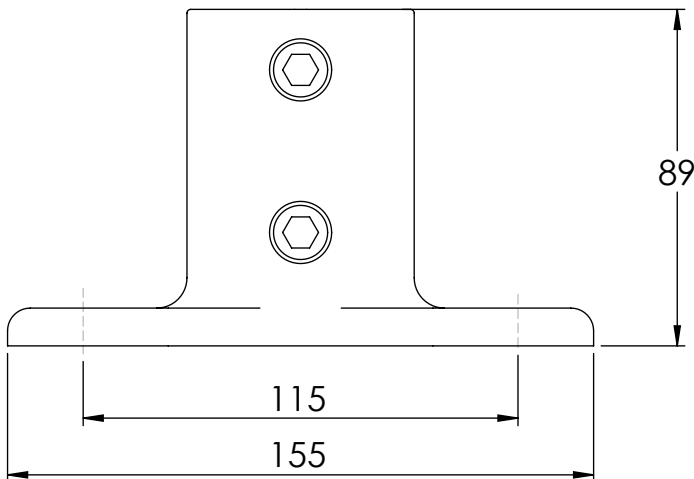
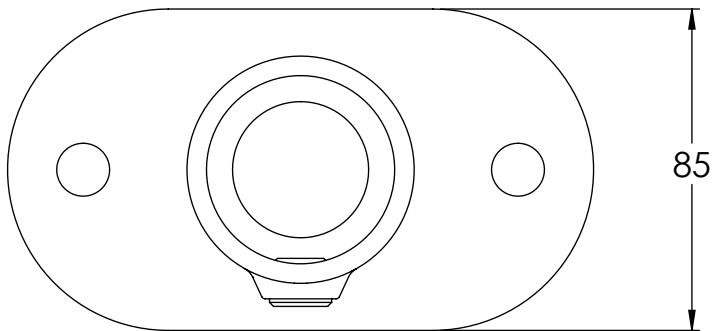
Issue No: 1

# Technical Datasheet No: 0014

## 62-8 STANDARD RAILING FLANGE

Part No: 006280010

Short Part No: 62-8



### APPLICATION

This component provides the means of connecting the Support Leg to the Base Plate. The component is also used to terminate the system against a facade.

### COMPONENT SPECIFICATION

Material	Malleable Cast Iron to BS 1562
Finish	Galvanised to BS EN ISO 1461
Weight	1.20

Issue Date: 30/05/2017

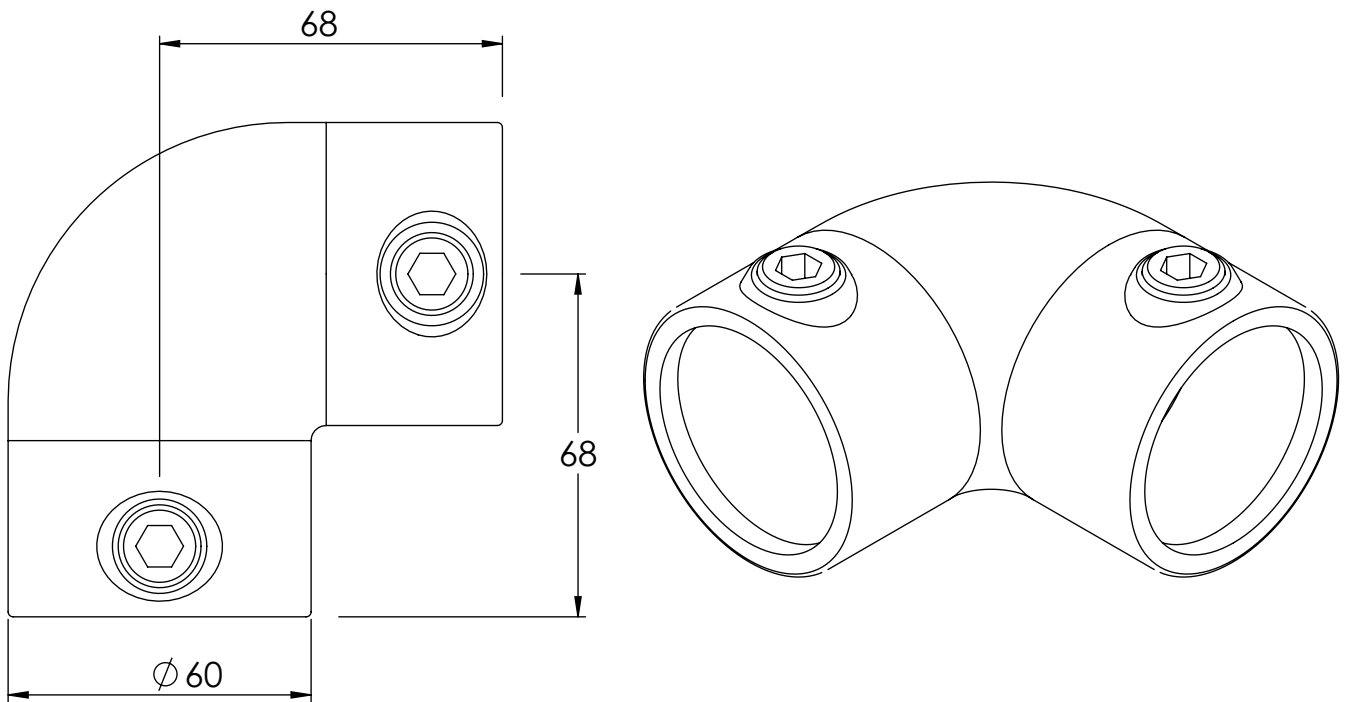
Issue No: 1

# Technical Datasheet No: 0015

15-8 90° ELBOW

Part No: 001580010

Short Part No: 15-8



## APPLICATION

This provides the means of dealing with corners and changes in level.

## COMPONENT SPECIFICATION

Material	Malleable Cast Iron to BS 1562
Finish	Galvanised to BS EN ISO 1461
Weight	0.74

Issue Date: 30/05/2017

Issue No: 1

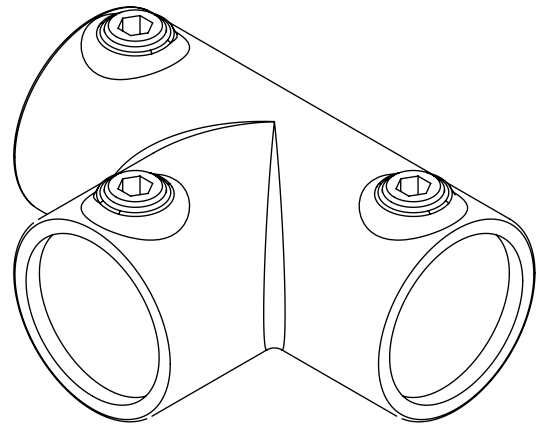
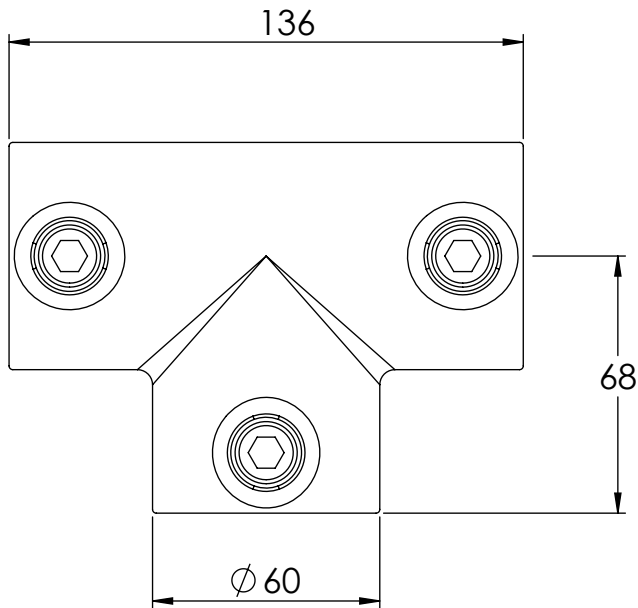


# Technical Datasheet No: 0016

25-8 THREE SOCKET TEE

Part No: 002580010

Short Part No: 25-8



## APPLICATION

This component can be used in many different instances, for example, changes in level.

## COMPONENT SPECIFICATION

Material	Malleable Cast Iron to BS 1562
Finish	Galvanised to BS EN ISO 1461
Weight	1.02

Issue Date: 30/05/2017

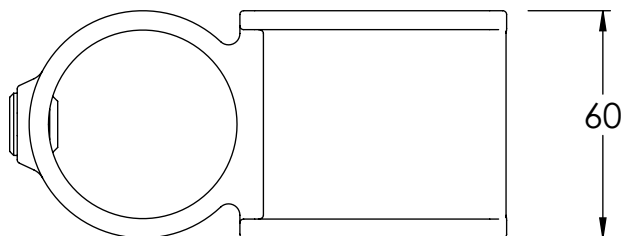
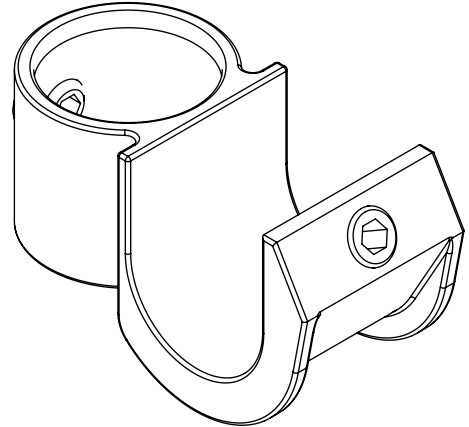
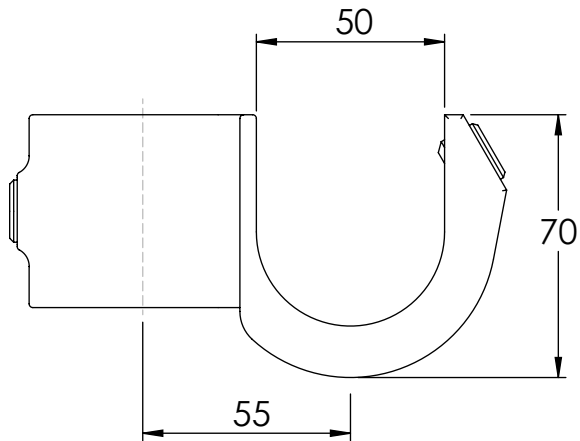
Issue No: 1

# Technical Datasheet No: 0017

135-8 KEE GUARD II KLAMP CASTING

Part No: 013580010

Short Part No: 135-8



## APPLICATION

This open cup fitting provides the method of linking the horizontal Main Rail Tubes to the Support Legs

## COMPONENT SPECIFICATION

Material	Malleable Cast Iron to BS 1562
Finish	Galvanised to BS EN ISO 1461
Weight	0.78

Issue Date: 30/05/2017

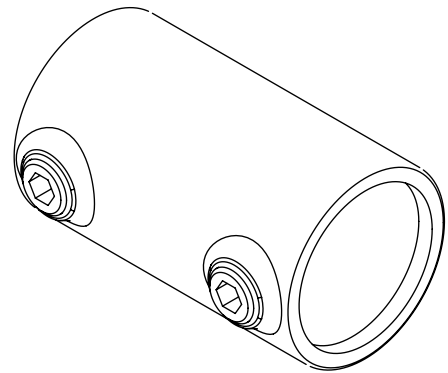
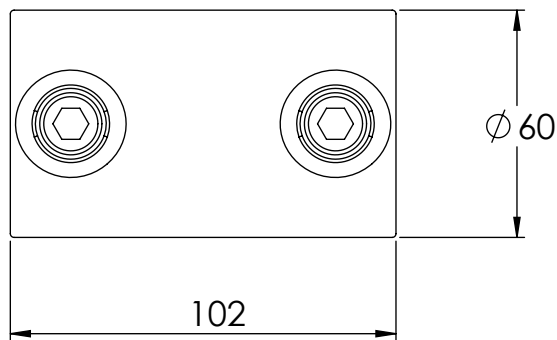
Issue No: 1

# Technical Datasheet No: 0018

14-8 STRAIGHT COUPLING

Part No: 001480010

Short Part No: 14-8



## APPLICATION

This component provides the method to link the horizontal Main Rail Tubes.

## COMPONENT SPECIFICATION

Material	Malleable Cast Iron to BS 1562
Finish	Galvanised to BS EN ISO 1461
Weight	0.62

Issue Date: 30/05/2017

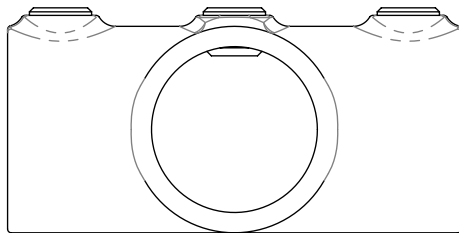
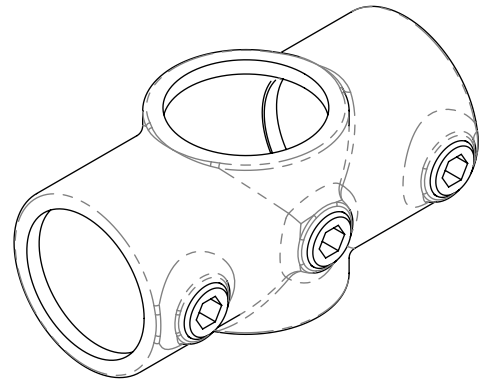
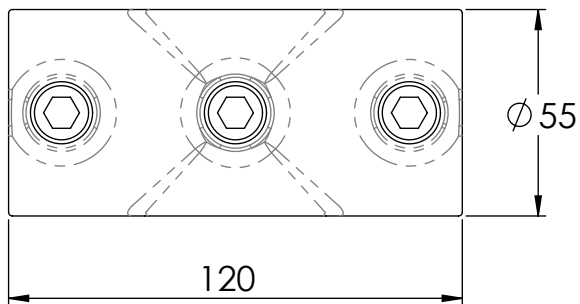
Issue No: 1

# Technical Datasheet No: 0019

26-7 TWO SOCKET CROSS

Part No: 002670010

Short Part No: 26-7



## APPLICATION

This component is used where two recycled PVC Counter Weights need to be joined together to form a counter weight end detail.

## COMPONENT SPECIFICATION

Material	Malleable Cast Iron to BS 1562
Finish	Galvanised to BS EN ISO 1461
Weight	0.77

Issue Date: 30/05/2017

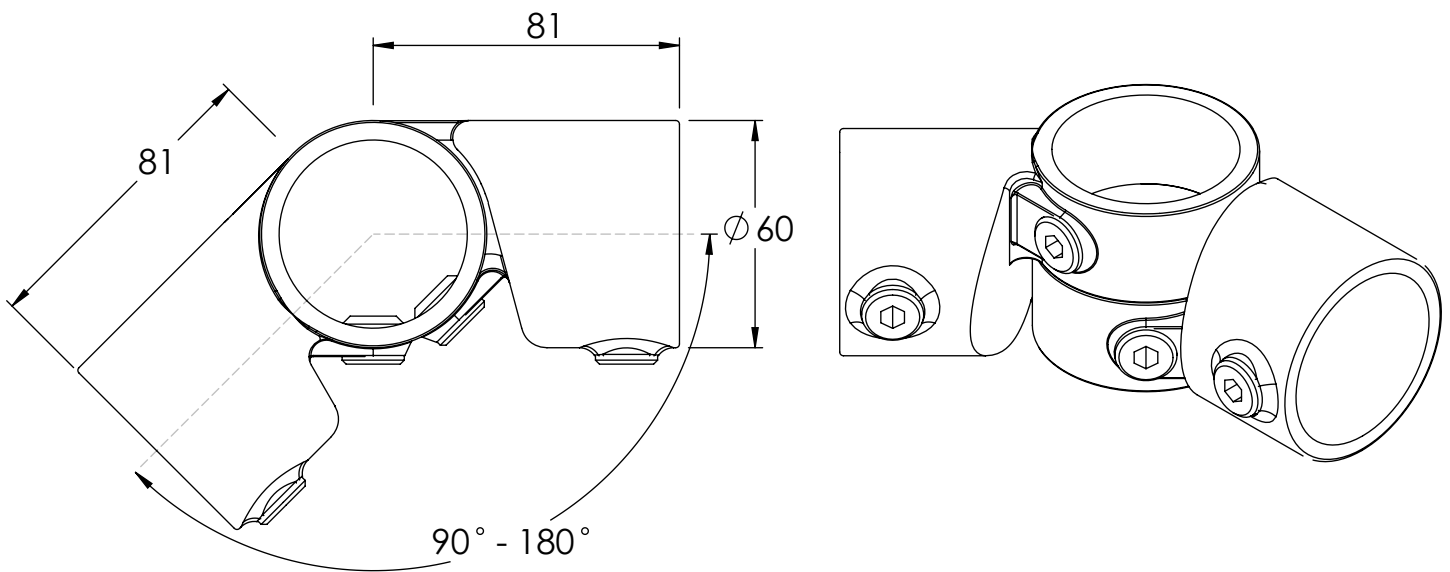
Issue No: 1

# Technical Datasheet No: 0020

A19-8 ADJUSTABLE SIDE QUTLET TEE

Part No: A01980010

Short Part No: A19-8



## APPLICATION

Used in pairs these components deal with angles 90°-180° and changes in level.

## COMPONENT SPECIFICATION

Material	Malleable Cast Iron to BS 1562
Finish	Galvanised to BS EN ISO 1461
Weight	1.06

Issue Date: 30/05/2017

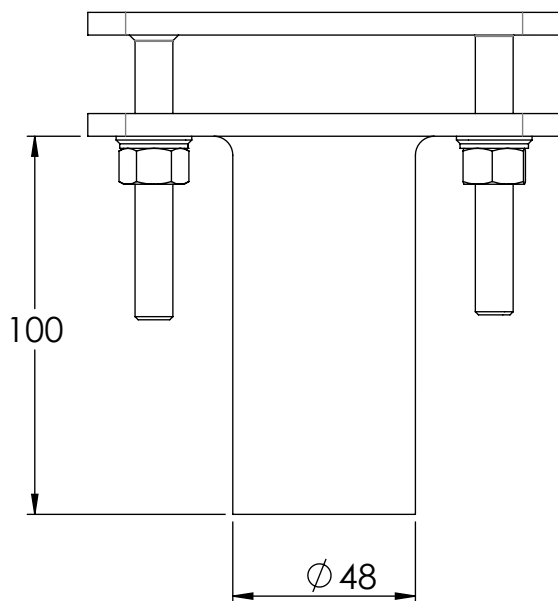
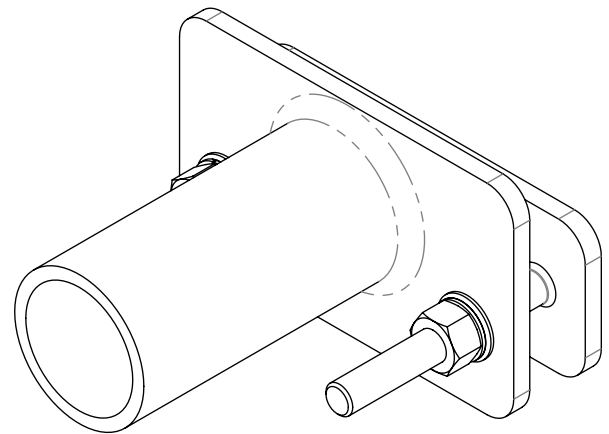
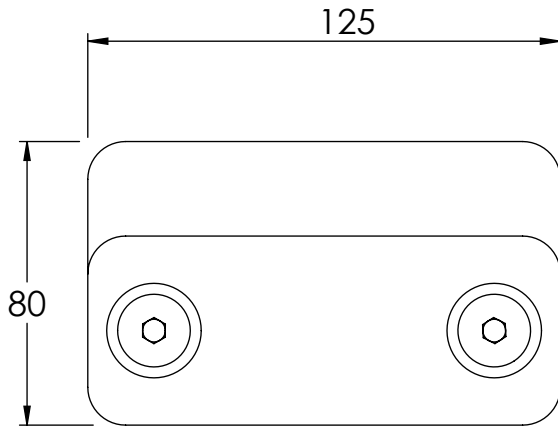
Issue No: 1

# Technical Datasheet No: 0021

SL109C SAFESITE WALL/LADDER CLAMP

Part No: KGA300210

Short Part No: SL109C



## APPLICATION

This component provides the means to terminate the system against a facade or clamp the system to a cat ladder/structure when the stringer is a maximum of 70mm wide.

## COMPONENT SPECIFICATION

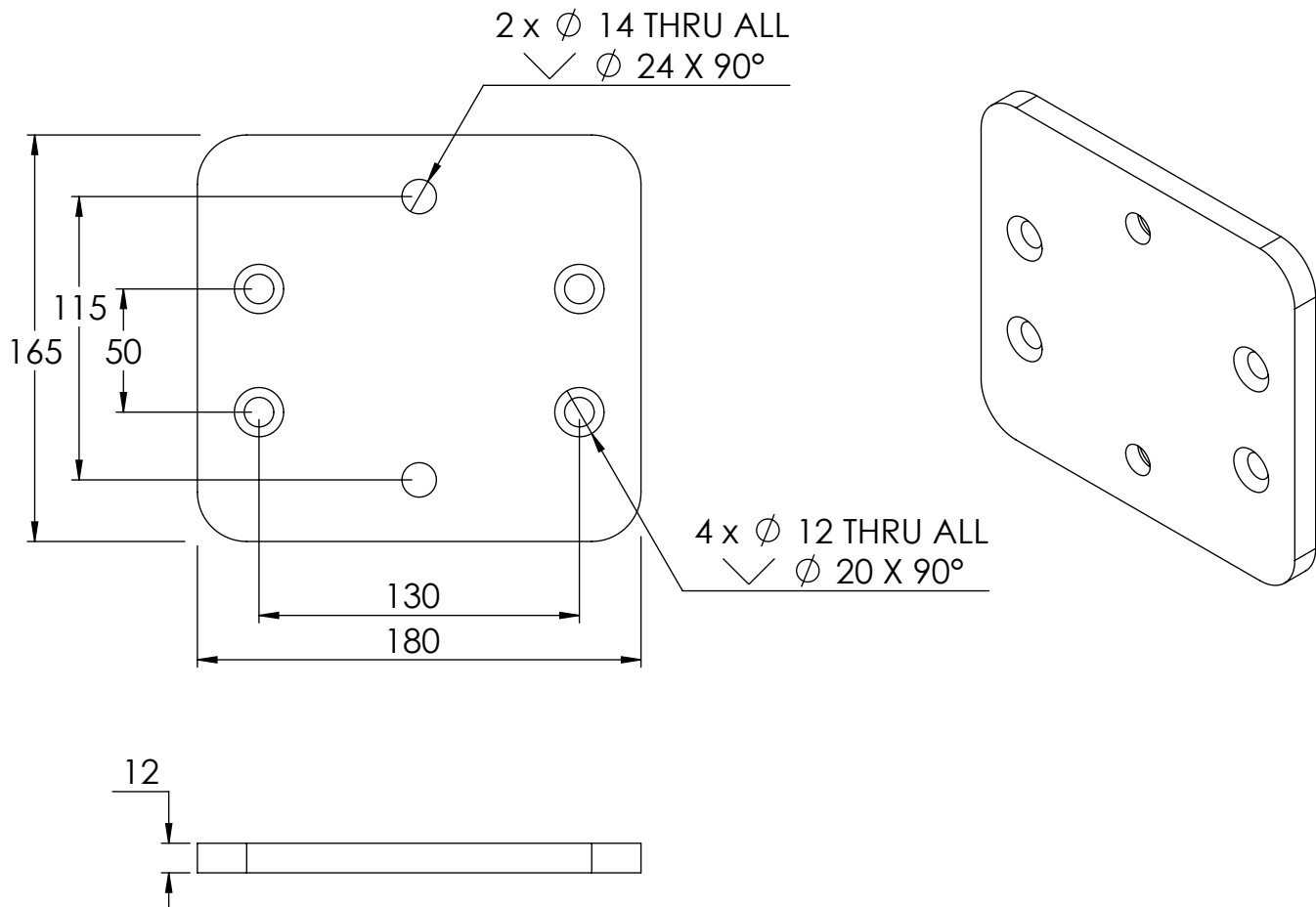
Material	Mild Steel
Finish	Galvanised to BS EN ISO 1461
Weight	1,10 kg

# Technical Datasheet No: 0022

KGTF69 KEE GUARD TOPFIX KK69 ADAPTER

Part No: KGTF69010

Short Part No: KGTF69



## APPLICATION

This plate provides a method of connecting the system to a topfix base plate.

## COMPONENT SPECIFICATION

Material	Mild Steel S235
Finish	Galvanised Steel to BS EN ISO 1461
Weight	2.65

Issue Date: 30/05/2017

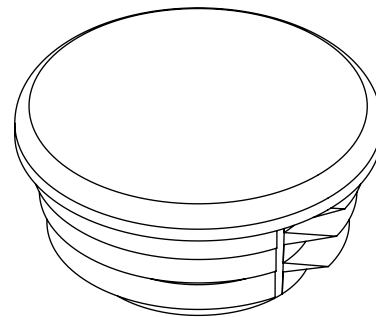
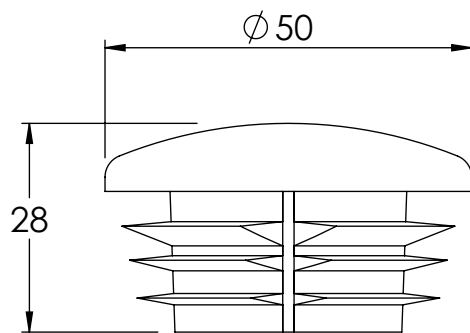
Issue No: 1

# Technical Datasheet No: 0023

77-8 PLASTIC PLUG

Part No: 007780040

Short Part No: 77-8



## APPLICATION

This component is fitted to the top of the Support Leg to prevent water ingress.

## COMPONENT SPECIFICATION

Material	HDPE
Finish	Natural
Weight	0.014

Issue Date: 30/05/2017

Issue No: 1

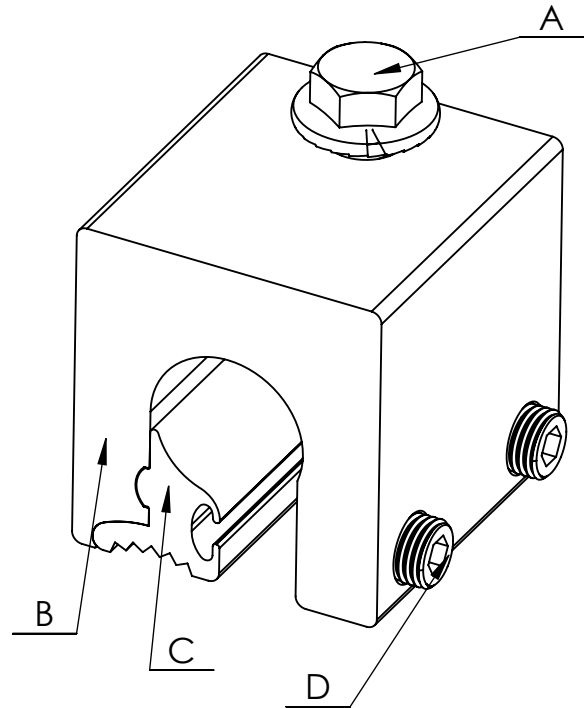
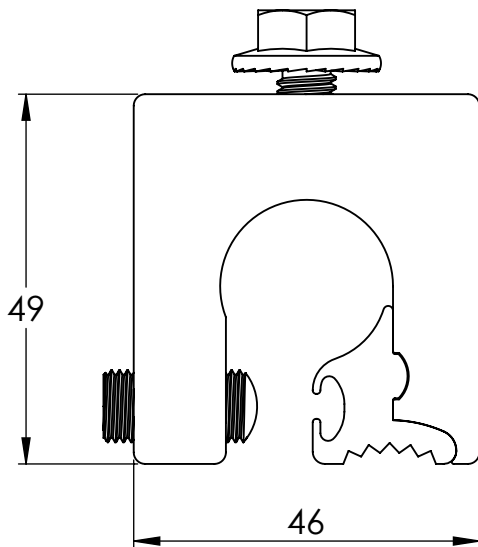
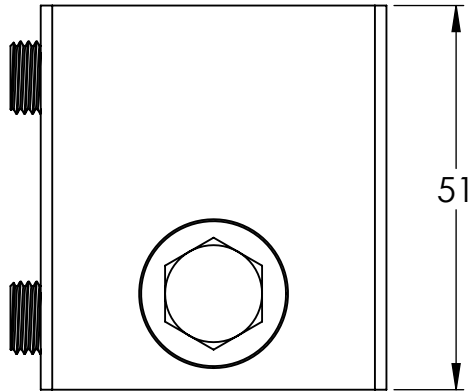


# Technical Datasheet No: 0024

Z5 STANDING SEAM CLAMP (PACK OF 4)

Part No: LAZ50PACK

Short Part No: Z5



A	M 8 FASTENER
B	BODY
C	INSERT
D	3/8" x 1/2" SET SCREW

## APPLICATION

These are used in conjunction with the Base Plate Metal Roofs to connect the plate to the roof structure.

## COMPONENT SPECIFICATION

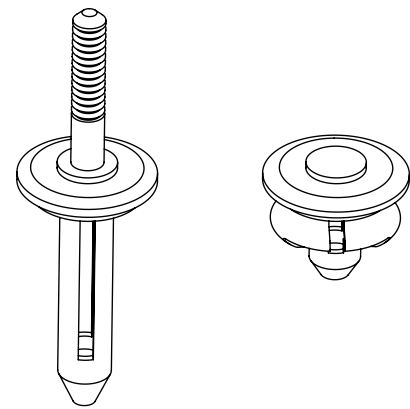
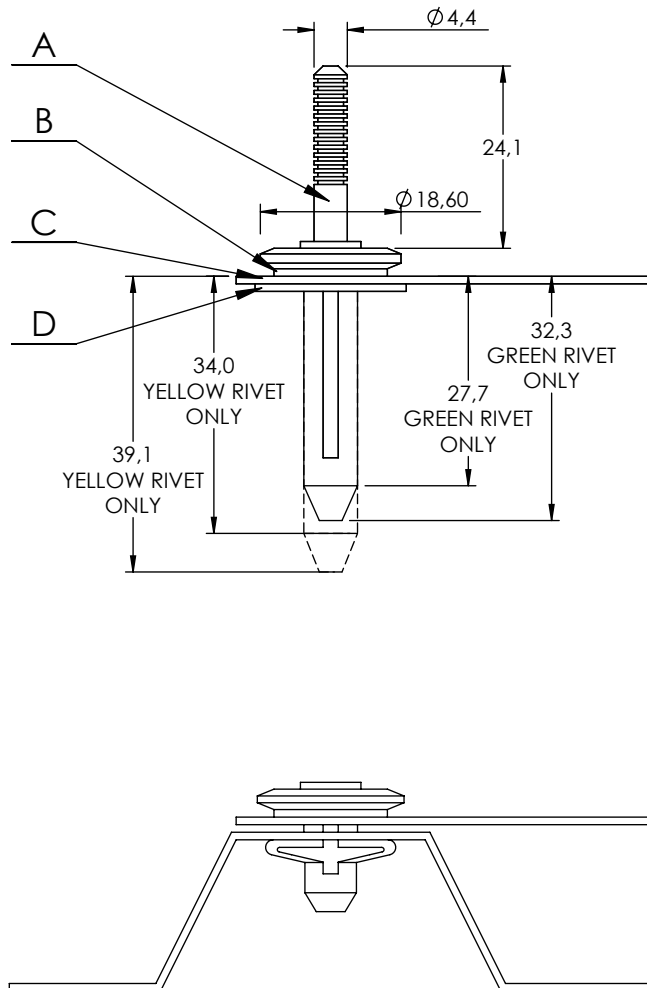
Material	Aluminium and Stainless Steel
Finish	Anodised / Zinc Plated
Weight	1,04/per 4

# Technical Datasheet No: 0025

## 7.7 BULB-TITE RIVIT EPDM

Part No: LA0KL2RVT

Short Part No: KL2RIVIT



A	RIVET
B	NEOPRENE WASHER
C	BASEPLATE
D	SEALING PLATE

### APPLICATION

These are used in conjunction with the Base Plate Metal Roofs to connect the plate to the roof structure.

### COMPONENT SPECIFICATION

Material	600 Series Aluminium Alloy
Finish	Natural
Weight	1kg per 100

Issue Date: 30/05/2017

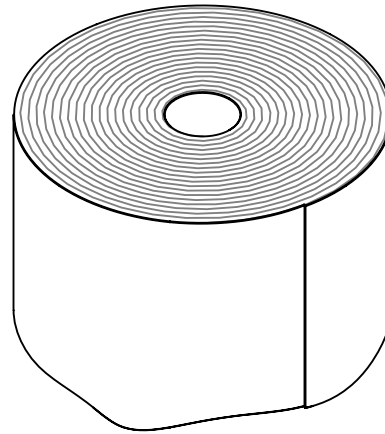
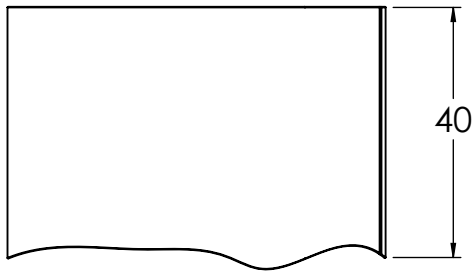
Issue No: 1

# Technical Datasheet No: 0026

TA-SEAL - KEELINE 20MM X 3MM BUTYL SEALING STRIP 15M ROLL

Part No: TASE00040

Short Part No: TA-SEAL



---

## APPLICATION

This is used in conjunction with the Base Plate Metal Roofs to form a seal between the underside of the plate and the metal decking.

---

## COMPONENT SPECIFICATION

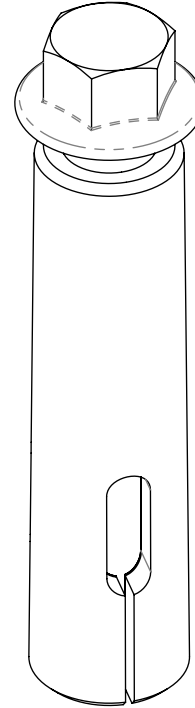
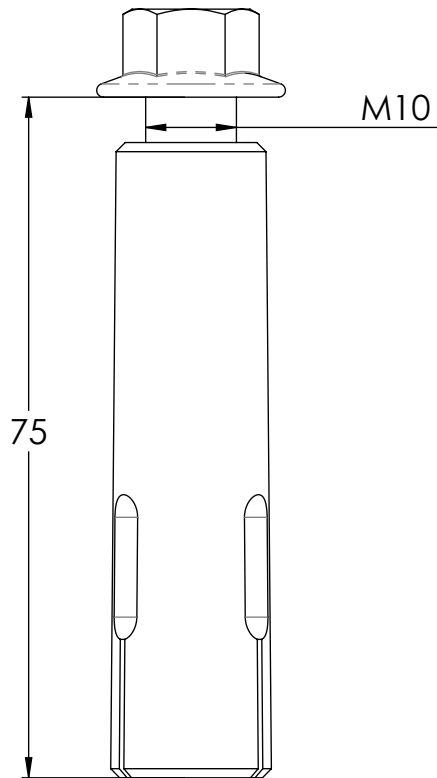
Material	Butyl
Finish	Natural
Weight	4.00

# Technical Datasheet No: 0027

SL110 WALL FIXING

Part No: SL110

Short Part No: SL110



## APPLICATION

The wall fixing is used in pairs in conjunction with a Wall Clamp.

## COMPONENT SPECIFICATION

Material	Stainless Steel AISI 316L
Finish	Electropolished
Weight	0.0064

Issue Date: 30/05/2017

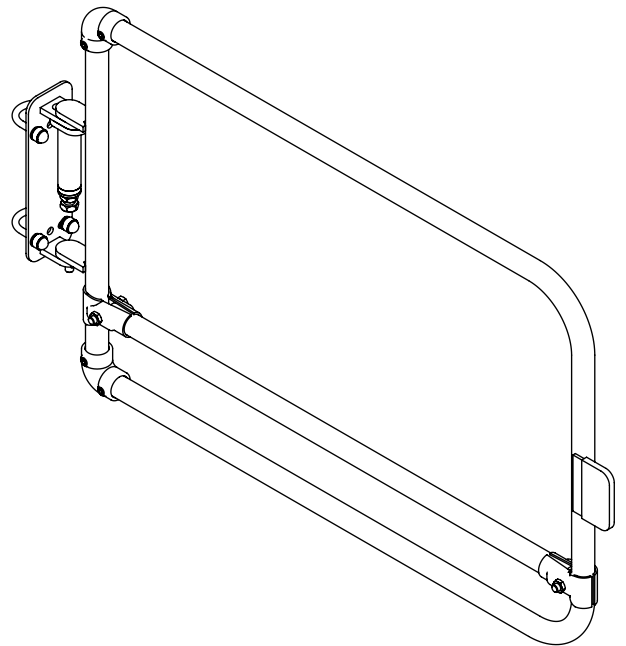
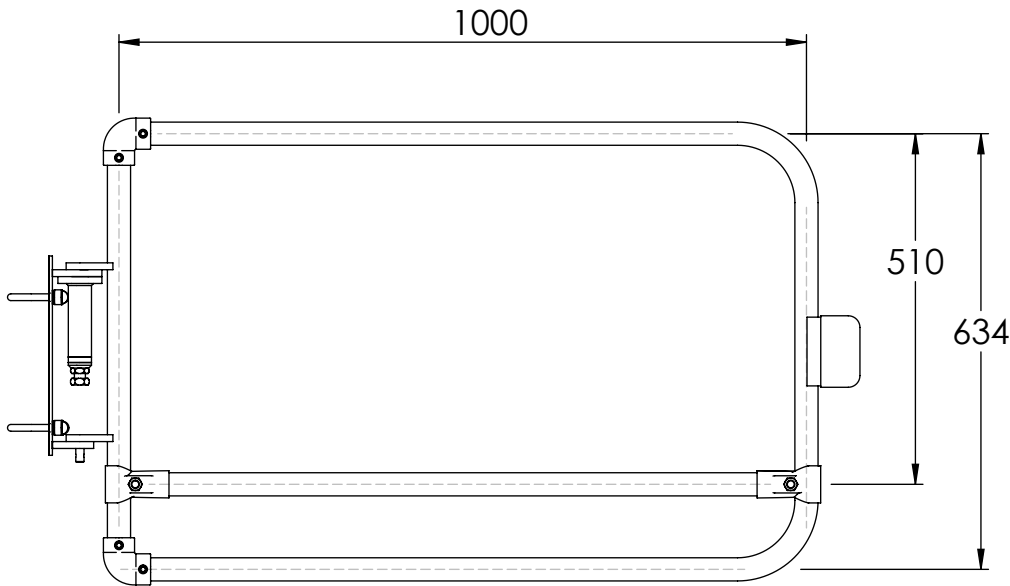
Issue No: 1

# Technical Datasheet No: 0028

SGEU600PC - EUROPEAN GATE - GALVANISED

Part No: SGEU600GV

Short Part No: SGEU600GV



## APPLICATION

Spring Loaded, self-closing safety gate. Manufactured from steel to EN 10255. 33.7mm diameter tube x 3.2mm wall thickness to meet requirements of EN 13374 & EN 14122. Complete with fixing pack.

## COMPONENT SPECIFICATION

Material	Galvanised Steel
Finish	Galvanised to BS EN ISO 1461.
Weight	11.00

Issue Date: 30/05/2017

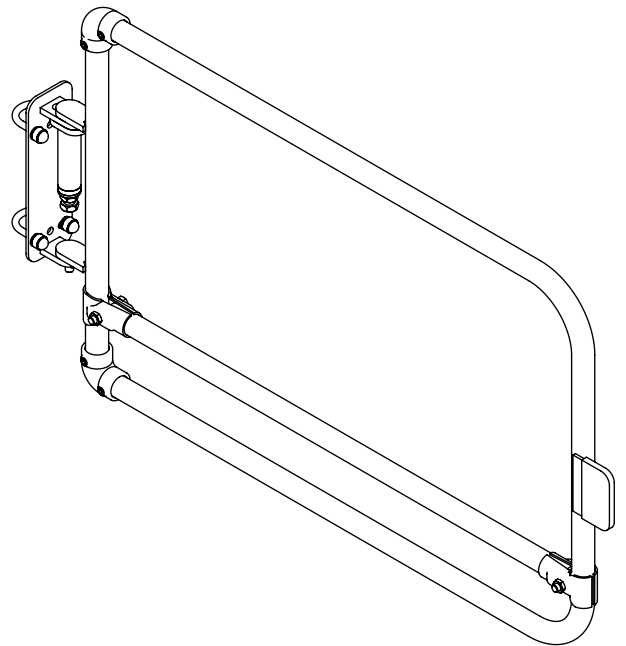
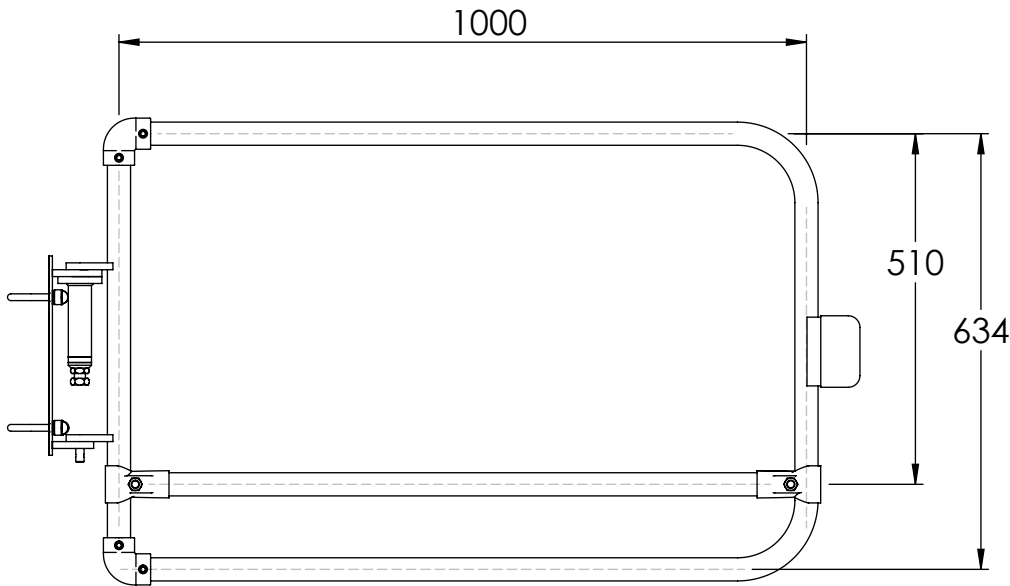
Issue No: 1

# Technical Datasheet No: 0029

SGEU600PC - EUROPEAN GATE - POWDER COATED

Part No: SGEU600PC

Short Part No: SGEU600PC



## APPLICATION

Spring Loaded, self-closing safety gate. Manufactured from steel to EN 10255. 33.7mm diameter tube x 3.2mm wall thickness to meet requirements of EN 13374 & EN 14122. Complete with fixing pack.

## COMPONENT SPECIFICATION

Material	Steel to EN 10255
Finish	Powder Coated Finish to EN 13438
Weight	11.00

Issue Date: 30/05/2017

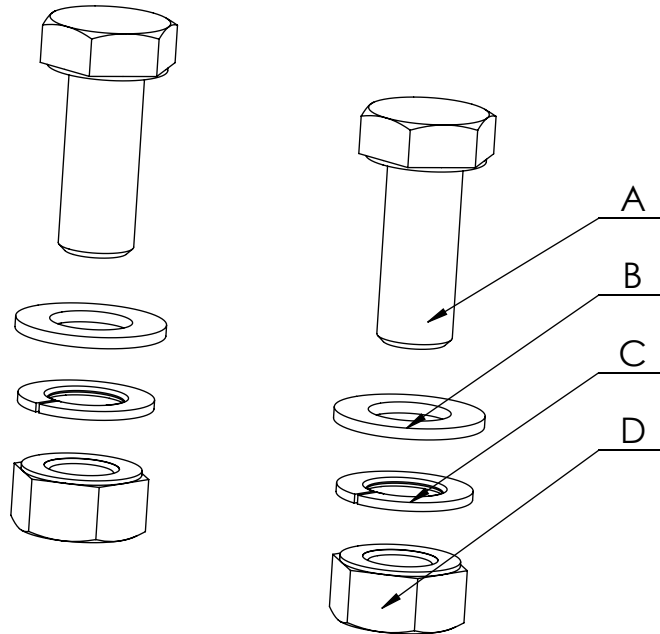
Issue No: 1

# Technical Datasheet No: 0030

TBFP1 - TOEBOARD FIXING PACK 1

Part No: TB255FP01

Short Part No: TBFP1



ITEM NO.	PART NO.	DESCRIPTION	QTY.
A	511M10025150	M10 x 25mm HEAD SCREW A4-70 S/S	2
B	531M10000150	M10 FLAT WASHER FORM A A4-70 S/S	2
C	531M10000250	M10 SPRING WASHER TYPE A A4-70 S/S	2
D	521M10000150	M10 FULL NUT A4-70 S/S	2

## APPLICATION

Fixings used to fix Toeboard with the fittings.

## COMPONENT SPECIFICATION

Material	Stainless Steel
Finish	Electropolish
Weight	0.08

Issue Date: 30/05/2017

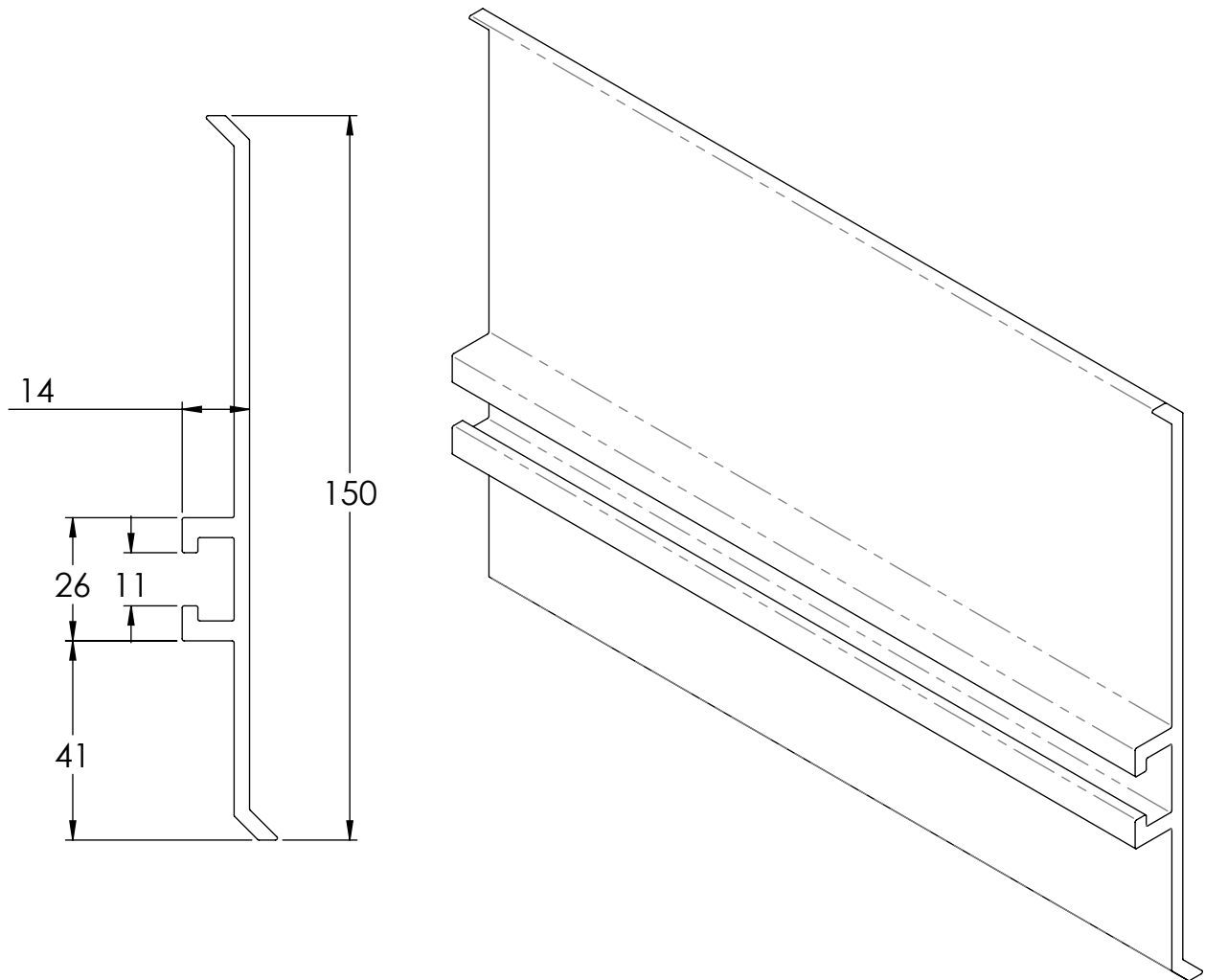
Issue No: 1

# Technical Datasheet No: 0031

TB150 - ALUMINIUM TOEBOARD EXTRUSION

Part No: L01500330

Short Part No: TB150



## APPLICATION

Toeboard is required on a railing whenever it would be potentially hazardous for an object to fall from the edge. The Toeboard can be used with fitting Type 130 or alternatively with the 69 or L69 (aluminium) Railing Flange. A channel in the Toeboard accepts the bolt head of the mounting hardware, allowing ease of placement. It can be supplied anodised if required.

## COMPONENT SPECIFICATION

Material	ALUMINIUM ALLOY 6063-T6
Finish	Natural
Weight	1,63/M

Issue Date: 30/05/2017

Issue No: 1

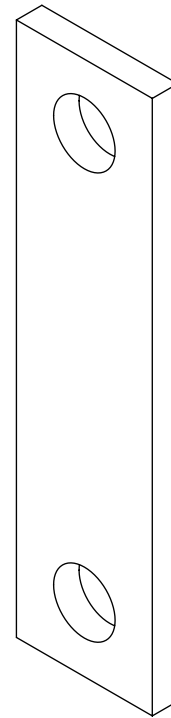
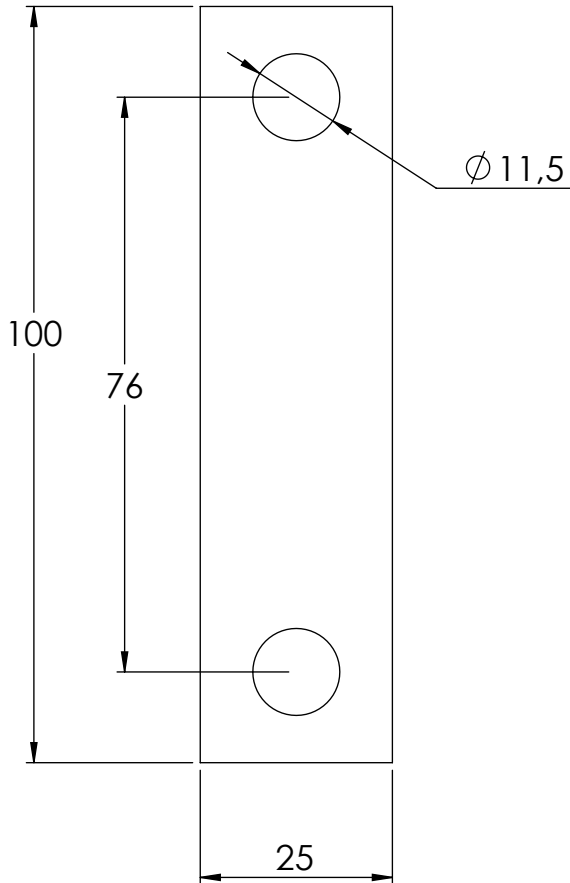


# Technical Datasheet No: 0032

TB2 - TOEBOARD CONNECTOR PLATE STRAIGHT

Part No: TB2555030

Short Part No: TB2



## APPLICATION

Bracket allows connect toeboards extrusions.

## COMPONENT SPECIFICATION

Material	ALUMINIUM ALLOY 6082-T4
Finish	Natural
Weight	0.03

Issue Date: 30/05/2017

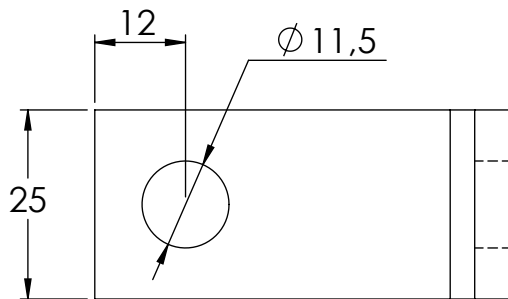
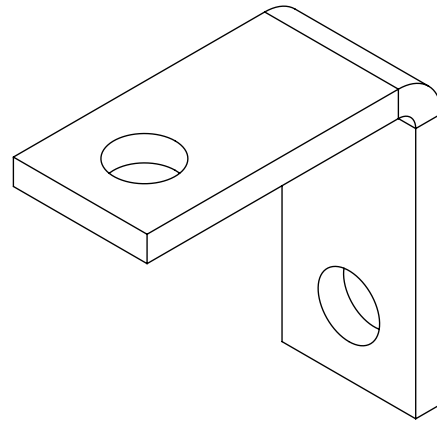
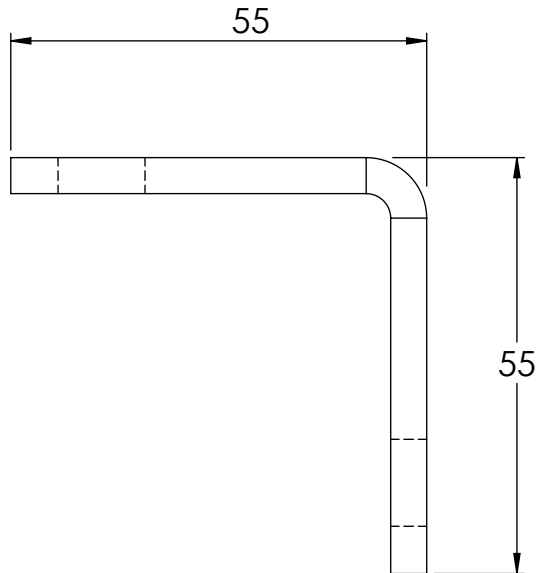
Issue No: 1

# Technical Datasheet No: 0033

TB2C - TOEBOARD CONNECTOR PLATE 90 DEG CORNER

Part No: TB2559030

Short Part No: TB2C



## APPLICATION

Bracket allows connect toeboards extrusion at 90deg angle.

## COMPONENT SPECIFICATION

Material	ALUMINIUM ALLOY 6082-T4
Finish	Natural
Weight	0.03

Issue Date: 30/05/2017

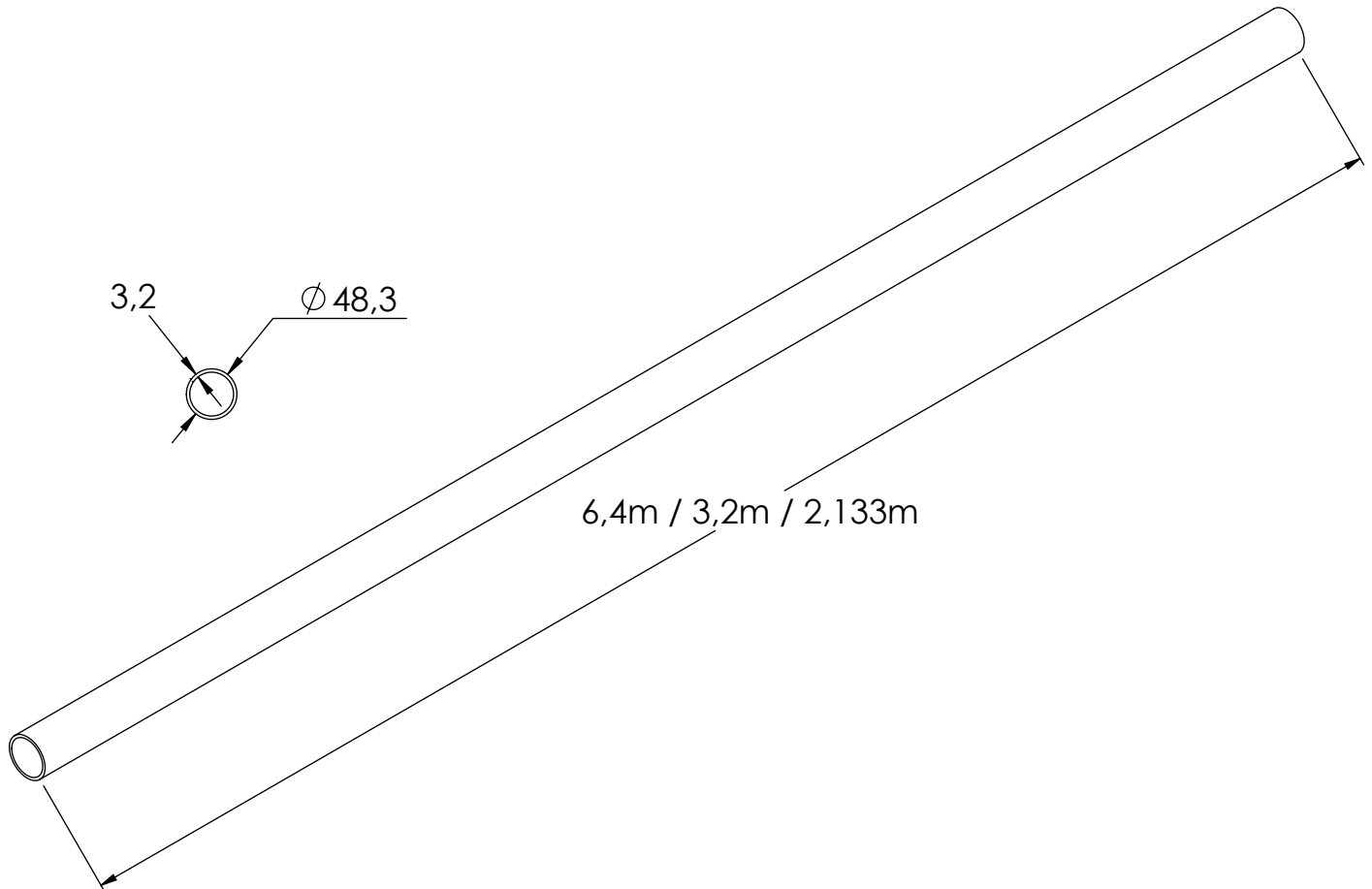
Issue No: 1

# Technical Datasheet No: 0034

MAIN RAIL TUBE 3,2MM - EN 14122-3

Part No: 8610 6,4m / 8614HL 3,2m / 8610213 2,133m

Short Part No: 8-6-G 6,4m / 8-6-GHL 3,2m / 8610213 2.133m



## APPLICATION

Supplied in three sizes for convenience, these components provide the horizontal rails of the system. Guardrail top and intermediate rails are produced in steel - 48.3mm external diameter.

## COMPONENT SPECIFICATION

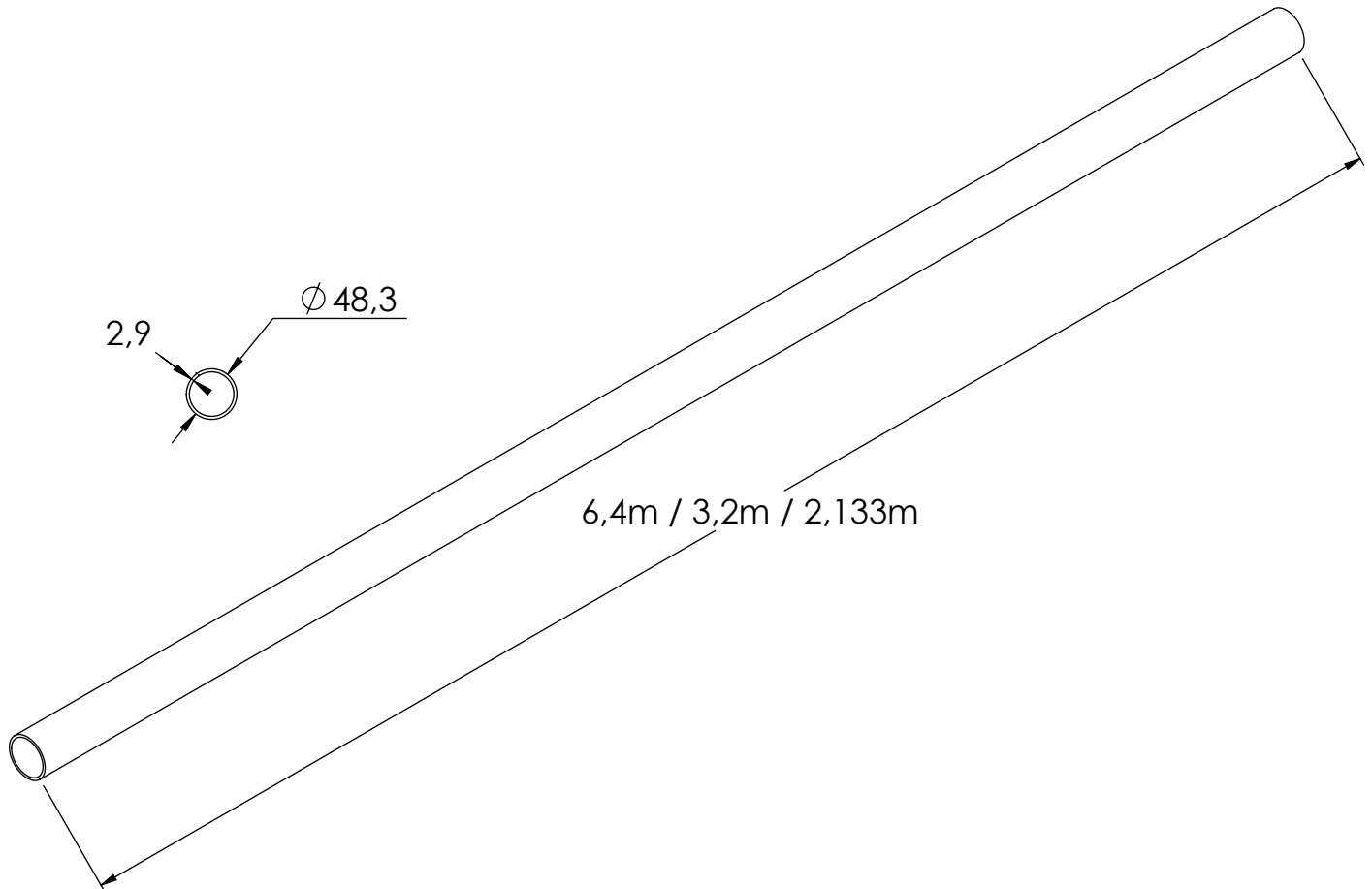
Material	Steel Tubing to BS EN 10255 3,2mm
Finish	Galvanised to BS EN ISO 1461
Weight	22.9 / 11,45 / 7,6

# Technical Datasheet No: 0035

MAIN RAIL TUBE 2,9MM - EN13374

Part No: 8310 6,4m / 8310HL 3,2m / 8310213010 2,133m

Short Part No: 8310 6,4m / 8-3-GHL 3,2m / 8310213 2.133m



## APPLICATION

Supplied in three sizes for convenience, these components provide the horizontal rails of the system. Guardrail top and intermediate rails are produced in steel - 48.3mm external diameter.

## COMPONENT SPECIFICATION

Material	Steel Tubing to BS EN 10255 2,9mm
Finish	Galvanised to BS EN ISO 1461
Weight	20,9 / 10,40 / 6,94

Issue Date: 30/05/2017

Issue No: 1