



SEPARATING PEOPLE FROM HAZARDS

New Product Announcement



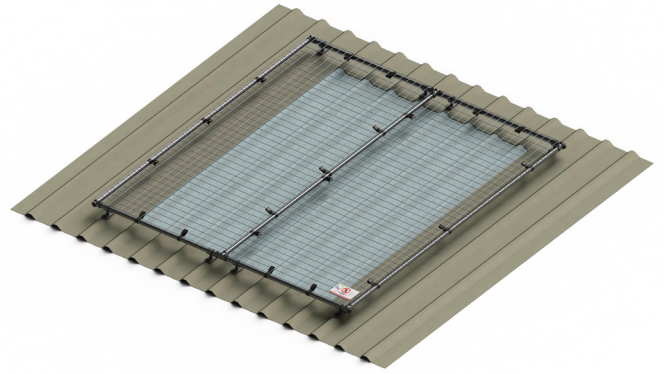
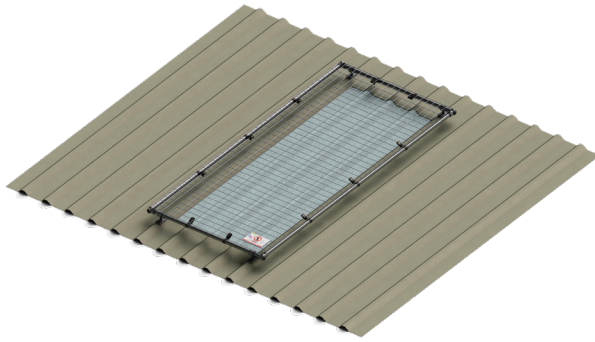
Kee Cover® Product Update

Introducing the full range of Traverse Skylight Protection Panels

For a number of years Kee Safety Limited has supplied a full range of Kee Cover® Skylight protection panels to provide fall protection on different sizes of Longitudinal skylights ie rooflights that run up and down the slope of a roof or in line (longitudinal) with the roof profile.

We now offer a full range of Kee Cover® Skylight protection panels to provide protection on Traverse rooflights that run primarily across (traverse) the profile of the roof as shown in the picture above.

The part numbers for the primary and the extension panels are shown in the table on the next page.



FAQ

What is the purpose of the Traverse Kee Cover®?

Having a full range of Traverse Kee Cover® modules means that we can provide fall protection for all configurations of skylights that may be found on the roof of a building. Coupled with the Kee Dome® product for dome style skylights we now have a full portfolio of fall protection systems for all types of roof top skylights.

How are the Traverse Kee Cover® skylight panels configured?

Every installation will start with a primary panel which has tube on all four sides. Extension panels which have tube on 3 sides are then added to cover the full width of the skylight.

What are the dimensions of the Traverse Kee Cover® skylight panels?

All panels are 1m wide and we have options to cover panels in different heights. The options are 3.6m , 2.4m, 2m, 1.5m and 1.2m. These sizes will cover all of the standard sizes of traverse skylights that are installed.

What standards should the panels comply to?

The panels should comply to EN 1873:2014 - Prefabricated Accessories for roofing and ACR(M)001-2014 The Red Book - "Test for non fragility of profile sheeted roofing assemblies".

Is the Traverse Kee Cover® skylight panel available in a raised version?

No – at this time we have only configured the traverse Kee Cover® skylight panels for the standard low level style. If there was a requirement for a big installation of traverse skylights in a raised format these could be set up.

Are the Traverse Kee Cover® skylight panels available now?

Yes - the panels can be ordered from Kee Safety Limited now.

Part Numbers

3.6m x 1m Traverse Skylight Panels	
KC361TPST	Kee Cover 3.6mx1m Primary panel Standard
KC361TEST	Kee Cover 3.6mx1m Extension panel Standard
2.4m x 1m Traverse Skylight Panels	
KC241TPST	Kee Cover 2.4mx1m Primary panel Standard
KC241TEST	Kee Cover 2.4mx1m Extension panel Standard
2m x 1m Traverse Skylight Panels	
KC021TPST	Kee Cover 2mx1m Primary panel Standard
KC021TEST	Kee Cover 2mx1m Extension panel Standard
1.5 x 1m Traverse Skylight Panels	
KC151TPST	Kee Cover 1.5mx1m Primary panel Standard
KC151TEST	Kee Cover 1.5mx1m Extension panel Standard
1.2m x 1m Traverse Skylight panels	
KC121TPST	Kee Cover 1.2mx1m Primary panel Standard
KC121TEST	Kee Cover 1.2mx1m Extension panel Standard



Kee Safety Limited

Cradley Business Park
Overend Road, Cradley Heath
West Midlands B64 7DW
United Kingdom

Tel: +44 (0) 1384 632 188

Fax: +44 (0) 1384 632 192

Email: sales@keesafety.com

Web: www.keesafety.co.uk