

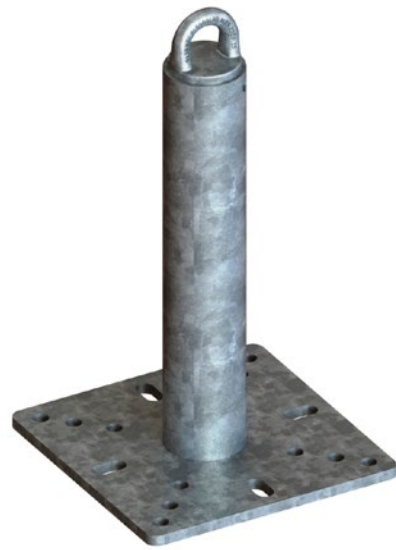
Kee Post®

SAFETY AT THE HIGHEST LEVEL



Rooftop Anchor Posts





STANDARD OPTIONS, SHORT LEAD TIMES

Ensure the safety for your maintenance personnel with Kee Post®, the premier rooftop tieback anchor manufactured in the USA.

Kee Post offers a straightforward solution for securing workers to the building's structure, enhancing safety during maintenance activities. Its modular design and flexibility cater to a broad spectrum of applications, from supporting suspended platforms to providing direct fall protection and integrating with horizontal lifelines.

EXPECT THE BEST



Compliant

Kee Post meets and exceeds CSA, OSHA, and ANSI standards.



Reliable

Reliable construction - High quality American welds, galvanized to ASTM A123 and manufactured to ISO 9000 factory control system.



Options

Kee Post offers a variety of options - With a wide selection of heights and tops to accommodate different roof buildsups.



Adjustable

Adjust when you need it - A wide range of connection methodologies through a standard plate.



Versatile

All standard surfaces - Steel, concrete, timber, whatever the roof type, our anchors will suit.



Engineered performance

No guessing or over-building - Our components are tested and proven to ensure performance in a wide range of applications.

A VARIETY OF APPLICATIONS



Tieback anchor

These anchors provide a secure attachment point for window washing and façade maintenance equipment.



Single point anchor

Single point anchors allow one user to safely tie off with the use of a lanyard or retractable fall protection device.



Lifeline anchor

Connect Kee Line® horizontal lifeline to provide continuous safety with productivity and mobility.

ANCHOR POST OPTIONS

1. COMPLIANCE



OSHA/ANSI/CSA
OS



California OSHA
CO

2. HEIGHT



12"
12



18"
18



24"
24

3. TOP



U Bar
UBG/UBS*



Forged
FRG



Tapped
M12



Swivel
SVL

4. BASE FIX



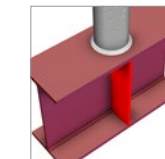
Epoxy
EPX



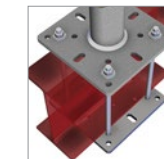
Shallow Deck
SHD



Cast-in
CST



Weld on
WON



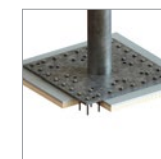
Wrap Around
WAR



BeamClamp
BCP



Bolted
BLT

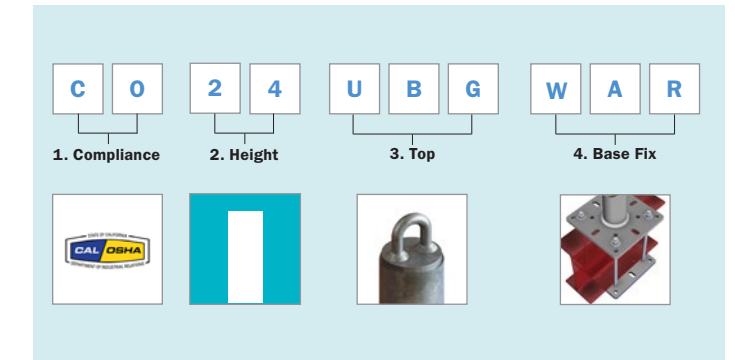


Screw in
SCW

* UBG = U Bar Galvanized
UBS = U Bar Stainless

Anchor Configuration Builder

The diagram below shows you how to build and order your anchor post using the SKU coding system.

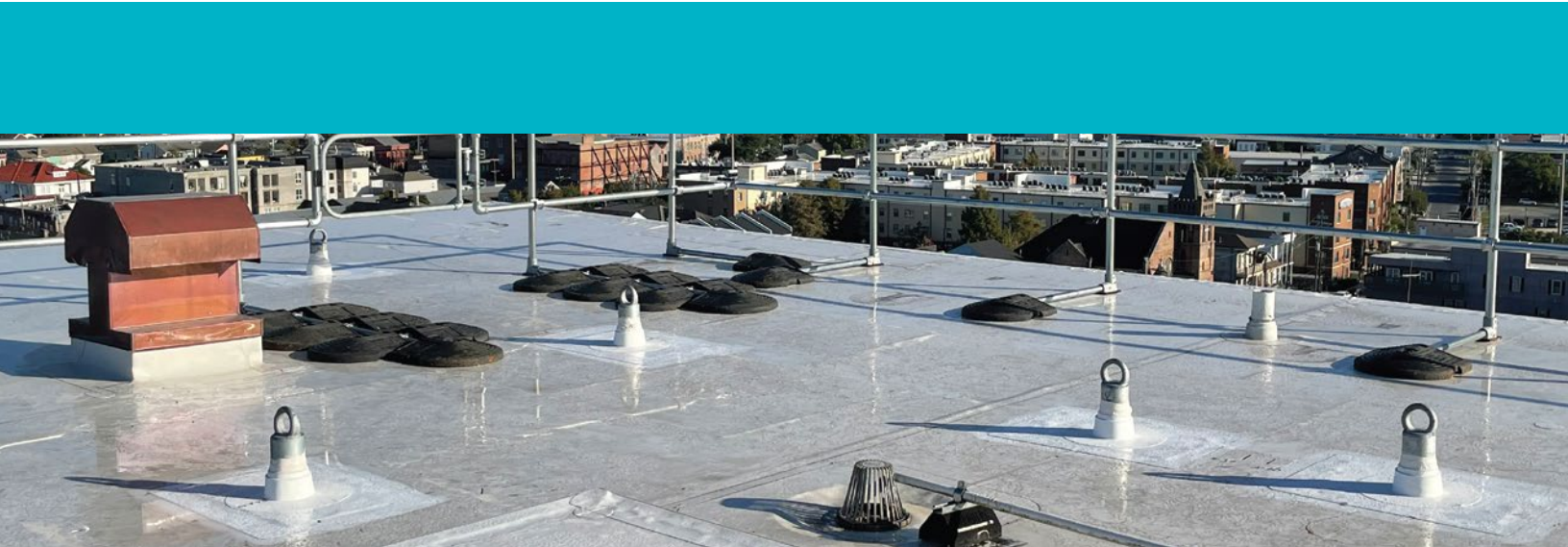


In the example above a Cal/OSHA 24" Galvanized U-bar Wrap Around Base would dictate a part number: **CO24UBGWAR**

COMPLIANCE ASSURED

Kee Safety's dedication to superior safety and reliability is embodied in Kee Post, thanks to our meticulous design and testing regimen. Our in-house team of structural engineers leverages cutting-edge techniques within our advanced testing facility to ensure Kee Post meets and exceeds CSA, OSHA, and ANSI standards.

- CSA Z259.15
- OSHA 1926.502
- ANSI Z359.18
- Cal-OSHA Title 8 3291 (for Cal-OSHA Range)



Protects the environment and your bottom line

The incorporation of polyurethane insulation within each Kee Post upright offers several significant benefits:



Enhances Building Efficiency - The insulation provided by Kee Post acts as an effective barrier against heat transfer, minimizing heat loss to maintain a stable interior temperature. This improvement in thermal regulation contributes significantly to the building's overall efficiency and energy savings.



Minimized Environmental Impact - Kee Post is engineered not just for your safety, but with the environment in mind. Its optimized design and efficient supply chain ensure a smaller carbon footprint than many of the other rooftop tieback anchors in the market.



USA

Kee Safety, Inc.
100 Stradtman Street
Buffalo, NY 14206
Tel: (716) 896 4949
Fax: (716) 896 5696
Toll Free: (800) 851 5181

Email: info@keesafety.com
www.keesafety.com

Canada

Kee Safety Ltd.
40 North Rivermede Road, Units 6 - 7
Concord, Ontario L4K 2H3
Tel: (905) 669 1494
Fax: (905) 669 4347
Toll Free: (877) 505 5003

Email: info@keesafety.com
www.keesafety.ca